

**FOR CHILDREN
14 MONTHS TO 9 YEARS OLD**

**OPEN MON-SAT,
8.00AM TO 7.00PM!**

Kspace

SUMMER SCHOOL 2025

FANTASTIC TRIPS & TALES

JULY 21ST TO AUGUST 23RD

&

**SUMMER EXTENSION: AUGUST 27TH TO SEPTEMBER 6TH
LION KING SAFARI**



BOOK NOW
www.kspacetokyo.org

SUMMER SCHOOL 2025

FANTASTIC TRIPS AND TALES & SUMMER EXTENSION: LION KING SAFARI

We invite your children to join us this summer for a deep dive of exploration. They will immerse in exciting content based on a wealth of facts, plus masses of fiction and fantasy about our planet and interstellar destinations beyond! Summer School at Kspace is THE best way for children to have a real 'break away' from their regular school schedules and ensure memorable experiences for the summer of 2025!

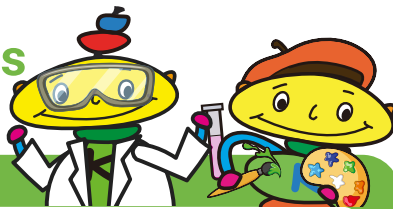
We offer top quality lessons, fun, and 'edutainment' packed programmes. Our experiences include special weekly highlights focused on sports and games, science, drama, and of course lots of art projects! We also have time for some good old mathematics and phonics. On our quest we'll be climbing aboard various exciting modes of real and imagined transport ...plunging deep into the depths of the sea, looking at stories from the Earth's first moments, trekking through mighty mountains, following creatures into the clouds, and concluding our journey amongst the planets with some very friendly aliens!

We also have an exciting Summer School Extension that will transport the children into a world inspired by the Lion King.

Every summer guest is treated to group study experiences especially designed for their age and Kspace also offers a fantastic range of 1-1 tailored tuition options too.

Daily Sub-Themes

14 months to 9 years



Mondays: Sports & Games

Tuesdays: Music, Drama & Phonics

Wednesdays: Geography & Exploration

Thursdays: Art & Design

Fridays: Science Exploration

Saturday: Variety



Group Names

Tuk-Tuks

(14 months to 3 years)

Submarines

(3 to 4 years)

Shinkansens

(4 to 6 years)

Rockets

(6 to 8 years)

UFOs

(8 to 9 years)

Programme and Service Options



Regular Attendance

14 months to 9 years: Monday through Saturday.

Regular Day: 9:00am to 3:00pm

Full Day: 9:00am to 5:00pm (online please book the regular day + 2 x after school hrs)

Note: Drop off and collection times are slightly staggered to avoid congestion near the school.

Extension Hours

Morning and Afternoon extension hours can be booked to extend your child's regular day.

- **Breakfast Club 8:00am to 9:00am**

Booked/paid in fixed units of 1hr.

If you would like your child to eat before their classes start, please supply their breakfast.

- **Afternoon Extension Hours 5:00pm to 6:00pm / 6:00pm to 7:00pm**

Afternoon Extensions are booked/paid in units of 1 hour.

After School Classes

14 months to 6 years: Monday through Saturday. 3:00pm to 5:00pm

7 to 9 years: Monday through Saturday. 3:00pm to 6:00pm

Private 1-1 Tuition (Music & Academic)

3 years +

1-to-1 tuition can be added to your child's attendance periods during the morning or afternoons from Monday to Saturday, or they can come for private tuition only. All new students start with a 1hr assessment. Sessions are booked in advance, in blocks. Please contact us for times and tutor availability.

Meals (Catered Lunches)



Monday to Friday: Order online from Kiwi Kitchen. You will be invoiced separately
<https://kiwikitchen.com>

Saturday: Order online from Kspace and pay in cash at drop-off.

Packed snack and lunches from home are also allowed and must be prepared to our Prohibited Food Policy.

Note: All details regarding dates and details for ordering meals, things to bring, packed lunch guide and food policies are sent in our Summer Starter Pack to enrolled parents.



Calendar



Each week our Regular Programme (9.00am to 3.00pm) has a key theme, and every day has a balance of activities plus an area of focus.

If you are not ready for the summer to end, then don't worry; Kspace has got a great extension plan that runs after the 5 main Summer School weeks. Taking inspiration from the Lion King, we add an extra two weeks of summer fun for everyone.

Note: Saturdays July 19th, August 23rd, 30th and Sep 6th will run to the regular Kspace Mid-Term Saturday content

JULY

MONDAY	TUESDAY	WEDNESDAY	THURSDAY	FRIDAY	SATURDAY
21 Sports & Games	22 Music, Drama & Phonics	23 Geography & Exploration	24 Art & Design	25 Science Exploration	26 Saturday Spectacle
Week 1: July 21st to 26th – Deep Dark Seas					
28 Sports & Games	29 Music, Drama & Phonics	30 Geography & Exploration	31 Art & Design		
Week 2: July 28th to August 2nd – Evolving Earth					

AUGUST

MONDAY	TUESDAY	WEDNESDAY	THURSDAY	FRIDAY	SATURDAY
				1 Science Exploration	2 Saturday Spectacle
Week 2: July 28th to August 2nd – Evolving Earth					
4 Sports & Games	5 Music, Drama & Phonics	6 Geography & Exploration	7 Art & Design	8 Science Exploration	9 Saturday Spectacle
Week 3: August 4th to August 9th – Mighty Mountains					
11 Sports & Games	12 Music, Drama & Phonics	13 Geography & Exploration	14 Art & Design	15 Science Exploration	16 Saturday Spectacle
Week 4: August 11th to 16th – Amongst The Clouds					
18 Sports & Games	19 Music, Drama & Phonics	20 Geography & Exploration	21 Art & Design	22 Science Exploration	23 Saturday Spectacle
Week 5: August 18th to 23rd – Interstellar Journeys					
25 Closed	26 Closed	Summer Extension weeks August 27th to 30th - Lion King Inspired 'Safari' September 1st to September 6th - Lion King Inspired 'Safari'			

Weekly Themes - 14 months to 9 years



For our little Tuk-Tuks, Submarines, Shinkansens and our older Rockets and UFOs we have five great themed weeks within the main Summer School period. We reference many great characters and concepts that are well known and loved by our children, as well as exploring many new ideas, creatures and places. We visit fantasy and real realms, investigate some fantastical facts and fiction, and generally become immersed in a lot of summer holiday exploits! From the youngest toddler to our oldest pre-teens our children love what we have waiting for them!

Our final Summer School Extension weeks fall when our Kspace International School students start their regular term. We then offer our Summer School guests different content with a 'Lion King Safari' theme, different daily schedules and revised after school range - always maintaining our infamous and fabulous balance of creative arts and academic features.



Week 1 - July 21st Monday to Saturday 26th

Deep Dark Seas

Let's get summer started! This week we take a deep dive in our submarines to learn all about a whole world that is still vastly unexplored! Our children across the groups will look at the relationship between humans and the sea, and fascinating topics - from cultures that dive to the science of pearls. We'll be looking at the stories behind giant squids, magical sea creatures like mermaids, brilliant and wonderful sea horses, creatures that light up - and a wobbly cooking fest as we create rainbow 'jelly' fish!

Underwater Robots, such as remotely operated vehicles (ROVs) and autonomous underwater vehicles (AUVs), are essential tools for ocean exploration and our oldest children will enjoy a design challenge and go on a discovery of their own.



WEEK 2 - July 28th to August 2nd

Evolving Earth

From the beginning of time our amazing home Earth has continued to change and evolve. We take a trip back in time on our magical Tuk-Tuk to hear stories of folklore and myth, and the rich and wonderful creation myths from around the world. During this wonderful week we will have great fun celebrating our planet with a special 'Eco-Day', when children work with resourced materials and come up with their own great ideas.

Our Earth is geographically astounding and we have many stunning geographical features to look at: Our older children will enjoy learning about great feats of human strength and determination as they look at great climbs and mountaineers, tectonic plates and the factors that have shaped our land.

What study of the Earth would be complete without our own Kspace version of 'World Food Day'! We will be creating tasty treats from various countries and learning about eating habits around the world.



WEEK 3 - August 4th to August 9th

Mighty Mountains

This week we pack our imaginary backpacks and trekking shoes and set off to look at some truly Mighty Mountains, a topic that will include famous mountains and ranges, as well as some really crazy volcanoes, cave formations and more. Our fabulous method of transport will include fantasy ski-lifts and cable cars.

Our Earth is geographically astounding and we have our very own famous beauty 'Fuji San' to reinvent, as we weave tall tales of dragons, mystery magical creatures, and other fantasy mountain dwellers. Our older children will enjoy learning about great feats of human strength and determination as they look at great climbs and mountaineers, tectonic plates and the factors that have shaped our land.

To add some extra 'flavour' to the week we'll be baking some delicious 'edible mountains' too!



WEEK 4 - August 11th to 16th

Amongst The Clouds

We will take a trip inside the clouds, look at airships and hot air balloons, discover why the sky is blue and cook Cloud Meringues and other delectable goodies. As we jump in our airships this week we'll be soaring high and looking at some simply amazing creatures who can do something that we can't - fly! Where do birds go when they migrate?! We will be looking at the real superstars of the bird world and their journeys (e.g.) Albatrosses, Terns, Godwits and more, to mythical creatures that fire our imaginations like the Phoenix.

Our funny and friendly characters from the film 'Up' will help us explore the power of balloons and our older children will enjoy looking at many uses for balloons on Earth and beyond.

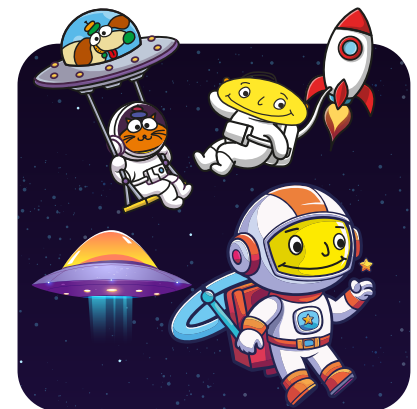


Week 5 - August 18th to 23rd

Interstellar Journeys

We end our themed summer weeks with a long, long journey on our very own UFO! We'll be navigating both by the stars and with our own hi-tech, discovering the planets, enjoying a Kspace style Moon & Mars anti-gravity landing and becoming astronauts. Our older children will be exploring meteors and new discoveries in space.

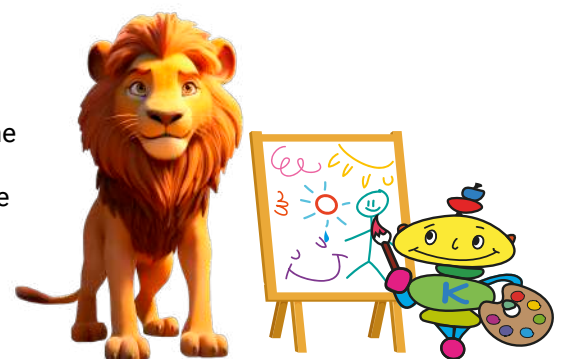
Of course the theme wouldn't be complete without a visit from our special 'Koko-Family', a delightful group of cheeky aliens who have been our school mascots for nearly 25 years! They cannot wait to tell us all about their own planet, and join us for stories, songs and some inter-planetary cooking!



Weeks 6 and 7 - August 27th to September 6th

Summer School Extension

If you're not ready for the summer to end, then don't worry: Kspace has a special extension plan that allows children to enjoy and learn right up to the beginning of September. Our Summer Extension provides additional summer fun, balancing creative and academic activities. This year we have some great 'Lion King inspired' content with a lot of fantasy 4X4 overland exploration, our very own safari, life-sized puppet making and more!



Notes: Monday 25th and Tuesday 26th closed.

Daily Theme



Every day at Kspace has a special selection of fun!

Mondays - Sports & Games

Children of all ages love to let off steam, particularly in summer! Sports & Games Mondays offer a funky range of sports, obstacle courses, team games, challenges, and physical fun that the kids won't be able to get enough of! Kspace has a beautifully equipped soft-gym, soft-floor rooftop with a custom-designed sun-awning and water-play equipment, plus a huge range of fantastic tools to build fantasy worlds for funky fitness!

Dates: July 21st & 28th. August 4th, 11th and 18th

Monday August 25th - Closed

Monday September 1st - Summer Extension Week



Tuesdays - Music, Drama & Phonics

Role-play is very popular with children and dramatic play has been proven to be a great way to learn! All four age groups have a special age-appropriate theme and content on 'Music & Drama Tuesdays' that ranges from world music, percussion time, teaching/interacting with puppets, make believe play, situation role-play, acting in pairs, small skits and even learning mini-dances! We make each class come to life with a lovely range of props, costumes, backdrops, toys and materials to create a memorable and rewarding experiences.

Dates: July 22nd & 29th. August 5th, 12th and 19th

Tuesday August 26th - Closed

Tuesday September 2nd - Summer Extension Week

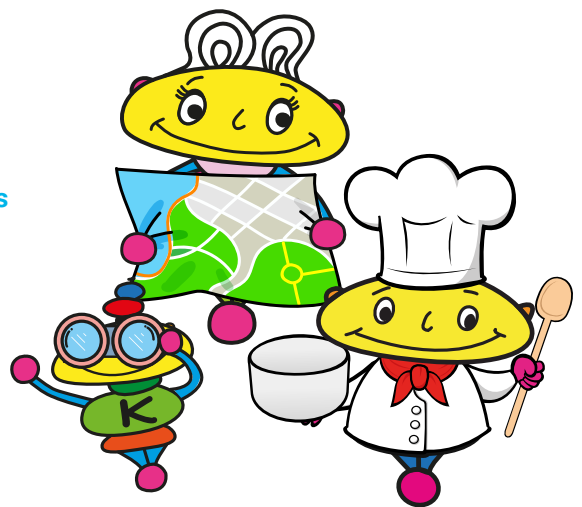


Wednesdays - Geography & Cooking

Across the weeks we learn about some great geographical facts and match our knowledge with tasting the culinary treasures of our discovered lands!

Dates: July 23rd & 30th. August 6th, 13th and 20th

Wednesday August 27th and September 3rd - Summer Extension Weeks



Thursdays - Art & Design Parties

Kspace is famous for its variety of creative arts and in summer we have some spectacular projects for the kids! We cover everything from large-scale mural art to individual pieces. Children love having the freedom to use materials generously, and the extraordinary variety of mediums we use goes beyond what they are normally exposed to. Projects are sensory based and fabulous fun with discovery of something magical every week!

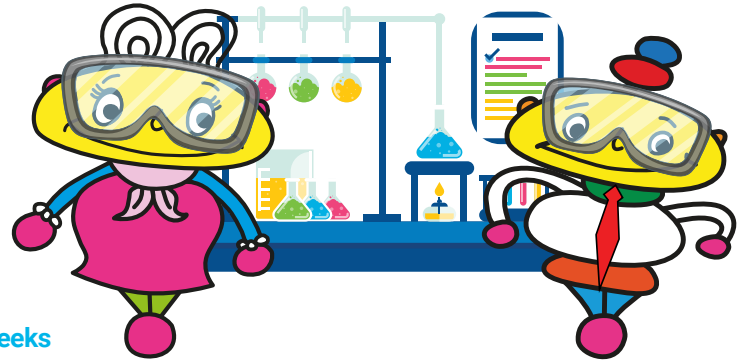
Dates: July 24th & 31st. August 7th, 14th and 21st
Thursday August 28th and September 4th - Summer Extension Weeks



Fridays - Science Exploration

Even the youngest children can enjoy explorative, hands-on, science based fun at Kspace! Fridays are for mini and midi-scientists, and our teachers take the children through some projects that will enhance their knowledge and make them even more curious about the world around them! Kids love to explore and inquire - they like things that bubble, fizz, whizz and pop! Science Exploration Fridays cover a wide range of subjects.

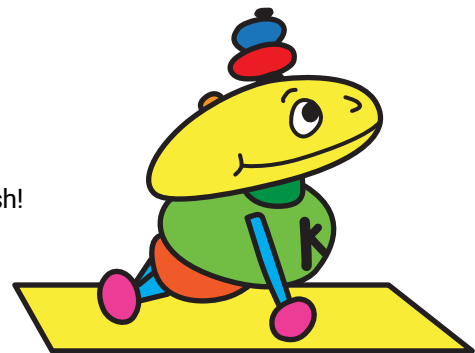
Dates: July 25th & August 1st, 8th, 15th and 22nd
Friday August 29th and September 5th - Summer Extension Weeks



Saturdays - Saturday Spectacle

The fun doesn't stop on Saturdays! Kspace is open every Saturday during summer and Saturdays can be included in your Summer School plan. The Saturday daily schedule has the same times but a slightly different combination of activities, with our wonderful balance of fun from start to finish!

Dates: July 26th & August 2nd, 9th, 16th, 23rd, 30th. September 6th.



For EFL/English Language Learners

ELL students are welcome in the Summer School period.

All new students start with a paid trial before Summer School (or an incoming meeting via Zoom) so we can assess language skills. Our ESL specialists will check incoming language levels and recommend specific attendance patterns and courses. Please note: Our curriculum/activities in summer school are fun and in a 'holiday style'. Class delivery is aimed at a general group level - not at an individual level, or for specific needs or challenges. We strongly recommend adding ESL/EFL After School classes and Saturday School for extra study - particularly for English beginners age 3yrs+. For all students with particular goals, private tuition focusing on specific areas is the best supplement to the regular day.

Please also ask us about our Summer Extension, offering an extra opportunity to boost language skills. This runs when our regular Summer School finishes.



SUMMER SCHOOL TIMETABLE



Children attending Summer School enjoy a cross range of themed activities, as below. In Summer School Extension (ages 14 months to 9 years) from August 27th onwards children enjoy a schedule more in line with term-time, with a balance of music, arts and crafts, academic learning and age appropriate fun activities.

	Tuk-Tuks (14 months to 3 years)	Submarines (3 to 4 years)	Shinkansens (4 to 6 years)	Rockets (6 to 8 years)	UFOs (8 to 9 years)
8:00 - 8:45/9:00	Optional Breakfast Club				
8:45	Regular Drop-Off Tuk Tuks/Submarines				
9:00	Regular Drop-Off Shinkansens/Rockets/UFOs				
9:00 - 9:15					Registration & Morning Meeting
9:15 - 9:30					
9:30 - 9:45	Themed Circle Time	Themed Circle Time	Morning Meeting & Themed Circle Time	Morning Meeting & Themed Circle Time	Themed Activity 1
9:45 - 10:00					
10:00 - 10:15	Story Time plus Snack/Toilet Time	Story Time plus Snack/Toilet Time	Focus Period (Maths/Phonics) & Snack 1 plus Toilet Time	Focus Period (Maths/Phonics) & Snack 1 plus Toilet Time	
10:15 - 10:30					Snack/Toilet Break
10:30 - 10:45	Themed Activity 1				
10:45 - 11:00		Themed Activity 1	Themed Activity 1	Themed Activity 1	Themed Activity 2
11:00 - 11:15	Gym Play				
11:15 - 11:30	Themed Activity 2				
11:30 - 11:45		Gym Play			
11:45 - 12:00	Lunch		Physical Activity Period <small>(on Fitness Fridays this period may be swapped for another subject)</small>	Physical Activity Period <small>(on Fitness Fridays this period may be swapped for another subject)</small>	Themed Activity 3
12:00 - 12:15		Themed Activity 2			
12:15 - 12:30	Puppets/Story Time/ Nappies/Toilet		Lunch & Toilet Time	Lunch & Toilet Time	Lunch & Rest
12:30 - 12:45					
12:45 - 1:00	Cocoon Club <small>(nap or rest time – some children like to snooze, others like to enjoy quiet table activities, puzzles or play with a teacher)</small>	Lunch & Toilet Time			
1:00 - 1:15					Physical Education
1:15 - 1:30			Themed Activity 2	Themed Activity 2	
1:30 - 1:45		Themed Activity 3			Well Being/Yoga/Relaxation
1:45 - 2:00	Gym Time/ Music Time				
2:00 - 2:15		Music & Percussion Time (or alternative activity)	Final songs/ stories/games	Final songs/ stories/games	
2:15 - 2:30	Activity 3				Themed Activity 4
2:30 - 2:45	Wind Down & Pack Up Regular Collection Time is at 2:45 pm	Wind Down & Pack Up	Daily Reiteration, tidy-up and wind down.	Daily Reiteration, tidy-up and wind down.	
2:45 - 3:00	Snack/break period for after-school students		Wind Down & Pack Up	Wind Down & Pack Up	Review of the Day
3:00 - 4:00	After-School Classes			After-School Classes	
4:00 - 5:00	After-School Classes			After-School Classes	
5:00 - 6:00	Extension Hrs available in units of 1 hr, starting and finishing on the hour @ 2,000yen. No part charges.			After-School Classes or Extension Hrs	
6:00 - 7:00				Extension Hrs	

Fees



Entrance Fees

All fees below are per child.

Kspace Enrolled Members Only

No Registration Fee

Materials Fee ¥8,000 per child

Non-Kspace Members

Summer School Registration Fee of ¥25,000 per child

Materials Fee ¥8,000 per child

Enjoy zero registration fee for future Spring, Summer & Winter School periods! (Summer Materials Fee will still apply)
In addition to the Summer School registration fee above, you can add:

1. Aspace Membership @ ¥20,000 - enter weekly Afterschool classes/Private Lessons and Spring, Summer & Winter seasonal camps without further registration fees

2. Saturday Membership @ ¥40,000 enter Saturday school, Private Lessons and Spring, Summer & Winter seasonal camps without further registration fees

Screening & Trial Fee

¥12,500 - Trial at Kspace (9:30am to 12:30pm) or (2:00 to 5:00pm)

¥15,000 - Zoom Screening (If your child is unable to attend the trial in person).

Daily Attendance Fee

Mid Week	Time	Single Day
All age groups	9:00am to 3:00 pm	¥13,000
	All-day option 9:00am to 5:00pm	¥17,000

Note:

- Saturday Fees: Saturday enrolled members can use their usual Saturday tickets for Saturday dates during Summer School.
Your fee (and attendance times) will remain the same as your prepaid blocks.

After School

• 3,000 per class for 1 hour sessions or ¥25,000 per block of 10 x 1hr classes

Private Tutorials (age 3yrs+)

Academic & Extra Curricular Subjects @ ¥9,000 per class (1hr)

Academic/Language Initial assessment @¥21,000

One-to-one lessons are offered in a variety of subjects e.g. Maths, Reading, Writing, Phonics, English Language, Science, Japanese, homework support and others.

Music @ ¥5,500 per 30 mins.

Extension Hours

Breakfast Club 8:00am to 9:00am, ¥2,000

Afternoon Extension

5:00pm to 6:00pm, ¥2,000

6:00pm to 7:00pm, ¥2,000

Note: No part-time charges.

Extra Costs

Uniform

Regular T-shirt ¥3,500 Shorts ¥6,000

Allergy Safety-Aware T-shirt ¥4,000

Striped Dress ¥9,000

Note: Uniform items are mandatory and must please be worn to each lesson.

Prices listed throughout the brochure are exclusive of Japanese Consumption Tax, to be added @10%

Meals

Kiwi Kitchen's catering service (Monday to Friday)

Regular size meal: morning snack + lunch set @¥900

Large size meal: morning snack + lunch set @¥1,000

Note:

- *If your child is staying on for After school classes, please provide an afternoon snack from home and label the container PM Snack.*
- *Kiwi Kitchen prices listed are inclusive of Japanese Consumption Tax*
- *Kiwi Kitchen's meals must be ordered in advance, by the Thursday before attendance. If the deadline is missed please send in meals from home prepared according to our policy.*
- *Kiwi Kitchen is an independent entity and these fees are correct up until September 2025.*

Saturday School Kspace Catering

Kspace Catering Morning snack & lunch @¥1,000

Afternoon Snack @¥300

Japanese Consumption Tax

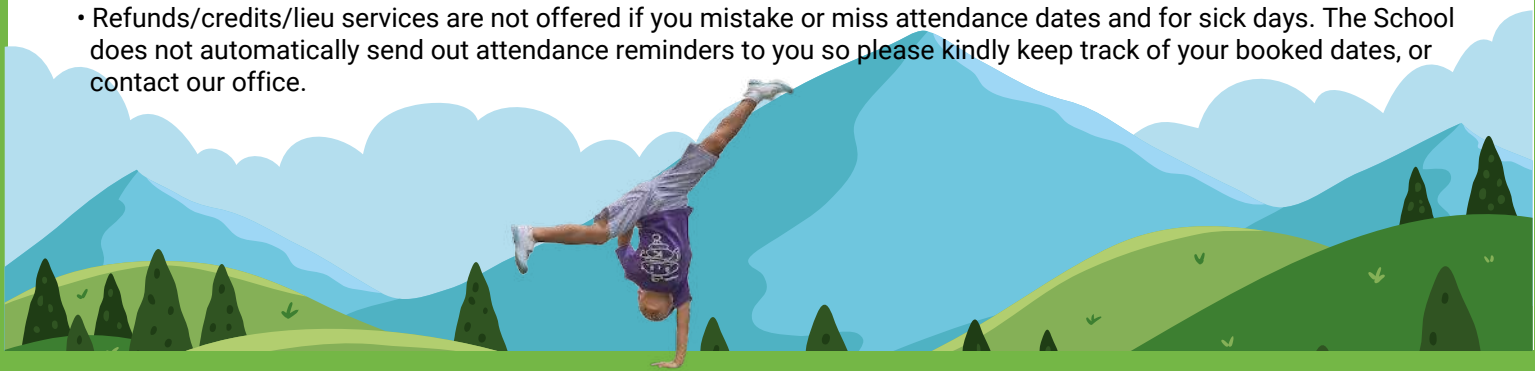
Prices listed in the fees document (with the exception of Kiwi Kitchen Fees) are exclusive of Japanese Consumption Tax @10%

Fee & Attendance Notes

These are abbreviated policy points. Full details of service, rules and policies (including health policy) are included in the authorisations forms/starter pack. We must receive a signed and agreed copy of the authorisations forms from you before your child may attend Summer School.

Refunds, Make-ups and Credits

- No discounts or refunds are offered, without exception, including instances of cancellation or when families are unable to enter the country.
- In the case of any force majeure closure we will work with families to provide alternative dates or options but we cannot guarantee alternative dates. Parents that cannot attend during an offered open period at the school cannot be refunded/reimbursed.
- Summer School fees only apply to the Summer School 2025 period only. Fees/credit/days cannot be carried over if unused within the exact summer school period, in full or in part.
- For residents and Kspace members only: Make-up days may be offered (within the Summer School period) if 2 days notice of absence is given in writing (only). Approval of make-up days is based upon space availability and is at the discretion of the school.
- For non-residents and overseas guests only: Make-up days, alternative dates or services are not offered, without exception. Failure to attend on booked dates will result in loss of the fees/service.
- Refunds/credits/lieu services are not offered if you mistake or miss attendance dates and for sick days. The School does not automatically send out attendance reminders to you so please kindly keep track of your booked dates, or contact our office.



Booking, Payment and Attendance

- Overseas families must prepay the ¥15,000 Screening Fee (per child) as soon as we contact you after your booking. The School will arrange a Zoom meeting and we must meet/see and interact with all prospective students and at least one parent. Note that this fee is retained in full by Kspace in the event that families are not offered a placement and/or if the family cancels.
- The Registration or Membership Fee (for new children) and Materials Fee (for all attendees) is charged regardless of how many days booked (from 1+) and is mandatory.
- Booking is made for specific dates in advance of attendance.
- Fees must be received prior to provision of services.
- The dates of attendance and fees are paid for a specific named child.
- If your child is younger than 3 years old and/or hasn't been placed in a child-only programme before, please contact us for our advice on the best attendance pattern.
- Positions are not secured until children's places have been verified by the School and payment has been received in full, in advance. We cannot reserve places unfortunately.
- Overseas parents/parent must enter the country with their child and be responsible for their child.



Communication



Summer School families have access to a fantastic password-controlled Members' website called 'Kokomo Club' that includes:

- ★ Videos
- ★ Theme updates
- ★ Newsletters

We invite parents to stay updated and like/follow/check-in and comment on our social media accounts.

 [@kospaceinternationalschool](https://www.facebook.com/kospaceinternationalschool)

 [@kospaceinternational](https://www.instagram.com/kospaceinternational)



Our school mascots Kokomo and Kokomama are part of the Koko family, very important aliens, who love to join us occasionally for events calendar highlights. They even make an appearance in class sometimes! You will see these cheeky, caring, little characters in our brochures, and the children proudly wear Kokomo on their uniform T-shirts.

Please get to know our school mascots on their profile page [Click here!](#)



Saturday School

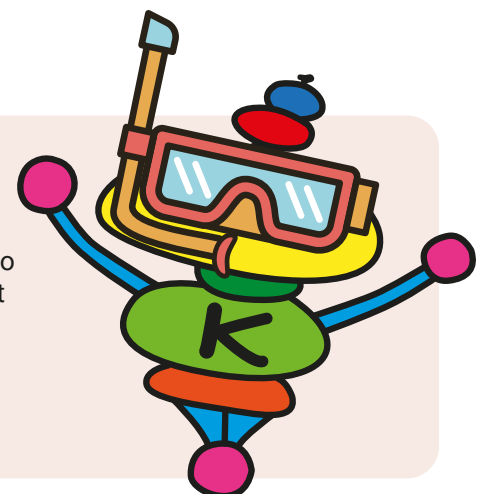


The fun doesn't stop on Saturdays! During summer school we have select Saturday School dates and these Saturday courses run throughout the year. Resident families in Japan can opt for Saturday Membership, which allows your child to also attend any Saturday dates outside the summer camp, as well as Winter and Summer entrance in the future!

See details of regular Saturday groups here:
<https://www.kspacetokyo.org/main/saturday/>

Orientation Information

All details to prepare you well in advance for Summer School such as meal booking and packed lunch guidelines, uniform/T-shirt ordering details, things to bring, emergency contact information and website access passwords are sent a few weeks before the programme starts. The Summer Starter Pack is automatically forwarded to enrolled parents. Feel free to ask us any questions that you may have in the meantime.



Summer School F.A.Q



Q. When do we have to enroll?

Summer School is very popular with many return families, so please try to book very early in the year. We cannot reserve or guarantee places unless they are paid in advance. Please note: We do not allow drop-ins.

Q. Is lunch provided or is it packed lunch?

Both options are available. Packed Lunch: If your child has any allergies or needs a specific dietary menu you must provide a meal (plus snack/snacks). We have a very strict Food/Drink Policy that will be sent to you.

Q. My child is still toilet training. Can we join?

Yes, if your child is at an applicable and recognized age for continuing toilet training. Please talk to us about immersion programmes to settle your younger child. You will be asked to read and sign our Toilet Code.

Q. Are all these lessons in English?

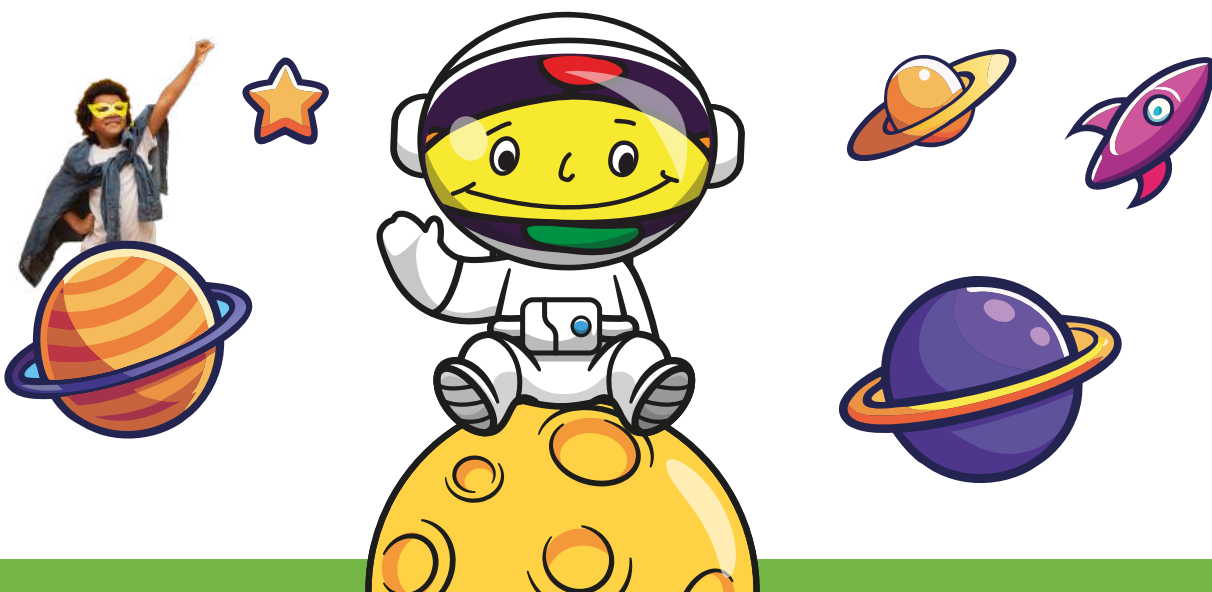
Yes, instruction is only in English in the main summer programme. Our teachers are predominantly native English speakers from the U.K., Australia/New Zealand, Canada, America, some countries in Europe and other English speaking nations.

Q. Do children need to be able to speak English to be eligible?

Summer School at Kspace is open to applications from all children ages 14 months to 9 years old. Our attendees include native and fluent English speakers from our own international school and other international schools, visitors from overseas, plus ELL students and Japanese nationals with a range of incoming abilities. Nursery age groups do not have a specific language eligibility level but it helps if children are familiar with English and have had some exposure to it. Overseas applicant children all have a Zoom meeting/screening and applicants in Japan have a mandatory on-site paid trial, prior to the Summer School start date. These processes help us identify language needs.

The course content is designed at a general level, ensuring that mid/intermediate and competent children can still enjoy and learn from it. Absolute beginners are welcome: During the application period we will recommend the best learning plan. Tailored English language support is available and fees will be advised. Please apply for details.

When we meet and observe your child we will discuss their background and incoming level, and pass our language/support recommendations to you. Residents in Tokyo benefit greatly from attendance in our regular extracurricular and ELL courses leading up to Summer School.



Summer After School

We run amazing After School extracurricular classes in summer. You can buy blocks of sessions and add from 3.00pm onwards to your child's summer school experience. Or, if your child attends our 'All Day' programme, sessions until 5.00pm are included in your 'all day' fee.

PRIVATE TUTORING

1 - 1 tutoring is also available in Summer School, with advance booking. We offer lessons in a range of academic subjects, some languages, a variety of music instruments and also vocal coaching. Private tuition is offered 6 days per week. Please enquire about tutor's schedules and availability.

After School Timetable

July 21st to August 23rd, 2025

The schedule is below but may be subject to change

After school classes for August 27th onwards will be different and the timetable is released in August.

	Monday	Tuesday	Wednesday	Thursday	Friday	Saturday
Tuk-Tuks (14 months to 3 years)	3:00pm Cooking 4:00pm Block Busters	3:00pm Sensory Play 4:00pm Letter Land	3:00pm Toddler Football 4:00pm Baby Ballet 4:00pm Wheels & Tracks	3:00pm Early Science 4:00pm Number Rhymes	3:00pm Pre-Phonics 4:00pm Art Studio	2:00pm Pre-Phonics 3:00pm Art
Submarines (3 to 4 years)	3:00pm Dance 3:00pm Phonics 4:00pm Art Masters	3:00pm Intergalactic Art 4:00pm Gymnastics 4:00pm Silly Science	3:00pm Phonics 4:00pm Sculpture	3:00pm Hip Hop 3:00pm Singapore Maths 4:00pm Collage and Clay	3:00pm Ukulele 4:00pm Phonics 4:00pm Painting	2:00pm Hip Hop 2:00pm Football 3:00pm Art 4:00pm English Language
Shinkansens (4 to 6 years)	3:00pm Dance 3:00pm Singapore Maths 4:00pm 3D Art Adventure	3:00pm Cooking Creations 3:00pm Gymnastics 4:00pm Word Wizards and Potion Makers	3:00pm Art 3:00pm English Language 3:00pm Japanese 4:00pm Telling the Time 4:00pm Football	3:00pm Team Games 4:00pm Hip Hop 4:00pm Counting Quest	3:00pm Phonics 3:00pm Art Masters 4:00pm Ninja Club 4:00pm Japanese	2:00pm Phonics 2:00pm Hip Hop 3:00pm Singapore Maths 4:00pm English Language
Rockets (6 to 8 years) UFOs (8 to 9 years)	3:00pm Cooking 4:00pm 3D Art Adventure 4:00pm Theatre Stars 5:00pm English Language	3:00pm Science Wizards 4:00pm World Records 4:00pm Japanese 5:00pm Science	3:00pm City Designers 3:00pm Ukulele 4:00pm Art 5:00pm Sports Academy	3:00pm Painting 3:00pm Boxing 4:00pm Invention Lab 5:00pm Hip Hop	3:00pm Art Masters 3:00pm Ninja Club 3:00pm Glow in the Dark Science 4:00pm Sewing 5:00pm Movie Club	3:00pm ESL 4:00pm Phonics 5:00pm Creative Art

Extracurricular classes often have talented guest and specialist teachers and we want to plan the best for your child. Some details may change after brochure release, so please kindly check with the school for any updates.

	T-Shirt	Striped Shorts	Striped Dress
Shining Stars/Tuk-Tuks (14 months to 3 years)	Yellow T-shirt 	Striped Shorts (Yellow) 	N/A
	Orange T-shirt 	Striped Shorts (Orange) 	N/A
Shooting stars/Submarines (3 to 4 years)	Pink T-Shirt 	Striped Shorts (Pink) 	Striped Dress (Pink) 
	Red T-shirt 	Striped Shorts (Red) 	Striped Dress (Red) 
Sparkling stars/Shinkansens (4 to 6 years)	Green T-shirt 	Striped Short (Green) 	Striped Dress (Green) 
Super Stars Purple/Rockets (6 to 8 years)	Purple T-shirt 	Striped Shorts (Purple) 	Striped Dress (Purple) 
Super Stars Purple/UFO's (8 to 9 years)	Navy T-shirt 	Striped Shorts (Navy) 	Striped Dress (Navy) 

PRICES

T-shirt ¥3,500

Striped Shorts ¥6,000

Striped Dress ¥9,000

Note: Uniform items are mandatory and must please be worn to each lesson.
Prices listed are exclusive of Japanese Consumption Tax, to be added @10%

SIZES

100

110

120

130

140

150

► [Online Order Form](#)

★ Summer Uniform



Examples (Not for sale at Kspace)



Uniform Indoor Shoes

- Only plimsolls/上履き are permitted inside the school.
PLEASE DO NOT PROVIDE ANY OTHER STYLE OF INDOOR FOOTWEAR.
- White or Black

