

14 months to 9 yrs
Open Mon-Sat +
After School Options

Kspace



Summer School 2024

Across The World

**July 22nd to August 17th
& Summer Extension August 21st to 30th**



BOOK NOW

www.kspacetokyo.org

Age Groups

Tiny Trekkers

(14 months to 3 years)

Secret Scouts

(3 to 4 years)

Good Guides

(4 to 6 years)

Lively Leaders

(6 to 8 years)

Campfire Captains

(8 to 9 years)

Note: We will place children in their appropriate group. Class selection will depend on language ability & date of birth/age as of August 31st in 2023.

Programme and Service Options

Regular Day

14 months to 9 years: Monday through Saturday. 9:00 am to 3:00 pm

Note: Drop off and collection times are slightly staggered to avoid congestion near the school.

Extension Hours

Morning and Afternoon extension hours can be booked to extend your child's regular day.

- **Breakfast Club 8:00 am to 9:00 am**

Booked/paid in fixed units of 1hr.

If you would like your child to eat before their classes start, please supply their breakfast.

- **Afternoon Extension Hours 5:00 pm to 6:00 pm / 6:00 pm to 7:00 pm**

Afternoon Extensions are booked/paid in units of 1 hour.

After School Classes

14 months to 9 years: Monday through Saturday. 3:00 pm to 5:00pm

Private 1-1 Tuition (Music & Academic)

3 years +

1-to-1 tuition can be added to your child's attendance periods during the morning or afternoons from Monday to Saturday, or they can come for private tuition only. All new students start with a 1hr assessment. Sessions are booked in advance, in blocks. Please contact us for times and tutor availability.

Meals (Catered Lunches)

Monday to Friday: Order online from Kiwi Kitchen. You will be invoiced separately. <https://kiwikitchen.com>

Saturday: Order online from Kspace and pay in cash at drop-off.

Packed snack and lunches from home are also allowed and must be prepared to our Prohibited Food Policy.

Note: All details regarding dates and details for ordering meals, things to bring, packed lunch guide and food policies are sent in our Summer Starter Pack to enrolled parents.



Calendar

Each week our Regular Programme (9.00am to 3.00pm) has a key theme, and every day has a balance of activities plus an area of focus.

JULY

MONDAY	TUESDAY	WEDNESDAY	THURSDAY	FRIDAY	SATURDAY
22 Sports & Games	23 Music, Drama & Phonics	24 Geography & Cookery	25 Art & Design	26 Science Exploration	27 Saturday Spectacle
WEEK 1 - July 22nd to 27th - South American Adventure					
29 Sports & Games	30 Music, Drama & Phonics	31 Geography & Cookery			
WEEK 2 - July 29th to August 3rd – African Discovery					

AUGUST

MONDAY	TUESDAY	WEDNESDAY	THURSDAY	FRIDAY	SATURDAY
			1 Art & Design	2 Science Exploration	3 Saturday Spectacle
WEEK 2 - July 29th to August 3rd – African Discovery					
5 Sports & Games	6 Music, Drama & Phonics	7 Geography & Cookery	8 Art & Design	9 Science Exploration	10 Saturday Spectacle
WEEK 3 - August 5th to August 10th – European Exploration					
12 Sports & Games	13 Music, Drama & Phonics	14 Geography & Cookery	15 Art & Design	16 Science Exploration	17 Saturday Spectacle
WEEK 4 - August 12th to 17th – Whistle Stop Tour - Asia & Australia!					
19 Closed	20 Closed	21 Global Art Explorers - Balanced creative, sports and academic activities	22 Global Art Explorers - Balanced creative, sports and academic activities	23 Global Art Explorers - Balanced creative, sports and academic activities	24 Saturday Spectacle
Summer Extension Week 1 - August 21st to 24th - Global Art Explorers					
26 Global Art Explorers - Balanced creative, sports and academic activities	27 Global Art Explorers - Balanced creative, sports and academic activities	28 Global Art Explorers - Balanced creative, sports and academic activities	29 Global Art Explorers - Balanced creative, sports and academic activities	30 Global Art Explorers - Balanced creative, sports and academic activities	31 Regular Saturday School.
Summer Extension Week 2 - August 26th to 30th - Global Art Explorers					

Kspace International School is the perfect place for busy and working parents to ensure continuity for children throughout the holidays.

We invite children for many weeks of top quality lessons, fun and 'edutainment' throughout the summer holidays. They pack their imaginary travel chests and join us for a whirlwind trip around the globe. Accompanied by a merry band of heroes, rascals and furry friends, our kiddies will embark upon wonderful daily discoveries.

The fun doesn't stop after our regular day, and we continue with extra-curricular classes right up until 5.00pm. Other colourful characters from beloved movies and books like the Minions and Kung Fu Panda make an appearance to keep the summer camp atmosphere exciting, and our late-stayers enjoy quality care until 7.00pm.

Contents

Each year we choose an amazing theme that combines modern stories and characters with more traditional elements. We learn about different geographical facts, discover countries and cultures through music, dance, sports and games, science, cookery, and of course lots of art projects! We also have time for some good old mathematics and phonics.

Every summer guest is treated to study experiences especially designed for their age group.

Week 1 - July 22nd to 27th - South American Adventure

Let's put together our backpacks, find our passports and prepare to kick start summer with a wonderful week across some gorgeous vistas! Join our teachers and some imaginary characters from great movies like Coco, Encanto and Dora the Explorer as we role play hiking through Aztec ruins, learn about amazing folk art, pick up some catchy Spanish words and sit around the campfire for some riveting Spanish guitar. Vámonos amigos!

Week 2 - July 29th to August 3rd – African Discovery

So much to see and so little time - but when we work together as a team we can achieve wonders! Listen closely as we hear the elephants stomping...lions roaring...and animals of the savannas scurrying along. This week we have a fantastic multi-cultural safari through astounding Africa, including visits to unforgettable Egypt and heart stopping Kenya. Jambo, habari gani?

Week 3 - August 5th to August 10th – European Exploration

This week we will be in the past and present as we put on our viking helmets and join our mascot Kokomo and friends aboard the Kspace longboat. We set sail into the Scandinavian sunset in search of wild adventure, meeting cute creatures of magical forests, picking up some well known friendly characters like Minions and little mermaids on the way, and enjoying some tasty dishes, great sports and art!

Week 4 - August 12th to 17th – Whistle Stop Tour - Asia & Australia!

Namaste! We have so much to do as our summer themed weeks begin to wind down. Let's take a whirlwind trip to the magical Himalayas and soak up some incredible Indian culture, music and delicious cooking. We will also meet Kung Fu Panda and his cheeky crew as we enjoy a pit-stop in China. and then put on our cork hats as we look at the amazingly unique wildlife and artwork of Australia with our adorable 'Outback' friends as travel guides.

Weeks 5 & 6 - August 21st to August 30th - Special Summer Extension Programme

If you are not ready for the summer to end, then don't worry; Kspace has got a great programme for any child staying with us. Our Global Art Explorers get an extra 9 days of super star summer fun, with a daily balanced combination of creativity, fun activities to keep them stimulated, phonics.

Daily Theme

Every day at Kspace has a special selection of fun!

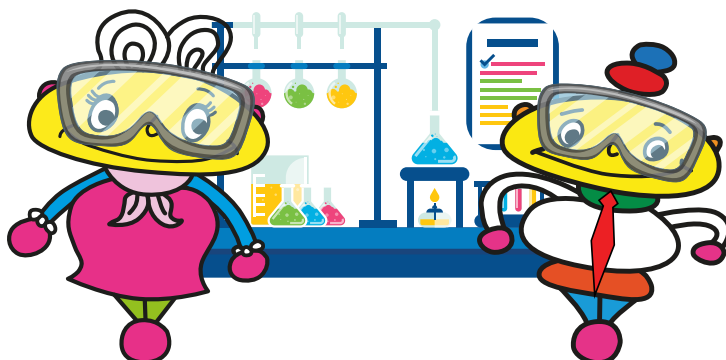
Mondays - Sports & Games

Children of all ages love to let off steam, particularly in summer! Sports & Games Mondays offer a funky range of sports, obstacle courses, team games, challenges, and physical fun that the kids won't be able to get enough of! Kspace has a beautifully equipped soft-gym, soft-floor rooftop with a custom-designed sun-awning and water-play equipment, plus a huge range of fantastic tools to build fantasy worlds for funky fitness!

Dates: July 22nd & 29th. August 5th & 12th

Monday August 19th - Closed

Monday 26th of August - Summer Extension Week



Tuesdays - Music, Drama & Phonics

Role-play is very popular with children and dramatic play has been proven to be a great way to learn! All four age groups have a special age-appropriate theme and content on 'Music & Drama Tuesdays' that ranges from world music, percussion time, teaching/interacting with puppets, make believe play, situation role-play, acting in pairs, small skits and even learning mini-dances! We make each class come to life with a lovely range of props, costumes, backdrops, toys and materials to create a memorable and rewarding experiences.

Dates: July 23rd & 30th. August 6th & 13th.

Tuesday August 20th - Closed

Tuesday 27th of August - Summer Extension Week

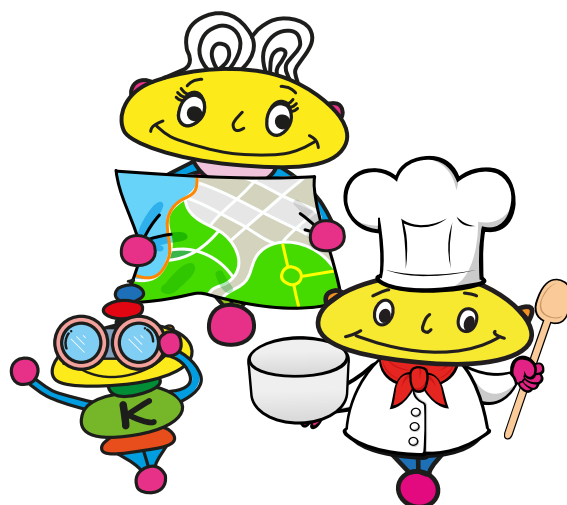


Wednesdays - Geography & Cooking

Across the weeks we learn about some great geographical facts and match our knowledge with tasting the culinary treasures of our discovered lands!

Dates: : July 24th and 31st. August 7th & 14th?

Wednesday 21st and 28th of August - Summer Extension Weeks



Thursdays - Art & Design Parties

Kspace is famous for its variety of creative arts and in summer we have some spectacular projects for the kids! We cover everything from large-scale mural art to individual pieces. Children love having the freedom to use materials generously, and the extraordinary variety of mediums we use goes beyond what they are normally exposed to. Projects are sensory based and fabulous fun with discovery of something magical every week!

Dates: July 25th. August 1st, 8th & 15th.

Thursday 22nd and 29th of August - Summer Extension Weeks



Fridays - Science Exploration

Even the youngest children can enjoy explorative, hands-on, science based fun at Kspace! Fridays are for mini and mid-scientists, and our teachers take the children through some projects that will enhance their knowledge and make them even more curious about the world around them! Kids love to explore and inquire - they like things that bubble, fizz, whizz and pop! Science Exploration Fridays cover a wide range of subjects.

Dates: July 25th and August 2nd, 9th & 16th.

Fridays 23rd and 30th of August - Summer Extension Weeks



Saturdays - Saturday Spectacle

The fun doesn't stop on Saturdays! Kspace is open every Saturday, and we can combine Saturday School with your regular Summer School plan, or attend them alone.

Dates: July 24th. August 3rd, 10th & 17th.



For EFL/English Language Learners

ELL students are welcome in the Summer School period.

All new students start with a paid trial before Summer School (or an incoming meeting via Zoom) so we can assess language skills. Our ESL specialists will check incoming language levels and recommend specific attendance patterns and courses. Please note: Our curriculum/activities in summer school are fun and in a 'holiday style'. Class delivery is aimed at a general group level - not at an individual level, or for specific needs or challenges. We strongly recommend adding ESL/EFL After School classes and Saturday School for extra study - particularly for English beginners age 3yrs+. For all students with particular goals, private tuition focusing on specific areas is the best supplement to the regular day.

Please also ask us about our Summer Extension, offering an extra opportunity to boost language skills. This runs when our regular Summer School finishes.



Summer School Timetable

Children attending Summer School until August 17th enjoy a cross range of themed activities, as below. In Summer School Extension (ages 14 months to 9 years) from August 19th onwards children enjoy a schedule more in line with term-time, with a balance of music, arts and crafts, academic learning and age appropriate fun activities.

	Tiny Trekkers (14 months to 3 years)	Secret Scouts (3 to 4 years)	Good Guides (4 to 6 years)	Lively Leaders (6 to 8 years)	Campfire Captains (8 to 9 years)
8:00 - 8:45/9:00	Optional Breakfast Club				
8:45	Regular Drop-Off Tiny Trekkers/Secret Scouts				
9:00	Regular Drop-Off Good Guides/Lively Leaders/Camp Leaders				
9:00 - 9:15					Registration & Morning Meeting
9:15 - 9:30					
9:30 - 9:45	Themed Circle Time	Themed Circle Time	Morning Meeting & Themed Circle Time	Morning Meeting & Themed Circle Time	Themed Activity 1
9:45 - 10:00					
10:00 - 10:15	Story Time plus Snack/Toilet Time	Story Time plus Snack/Toilet Time	Focus Period (Maths/Phonics) & Snack 1 plus Toilet Time	Focus Period (Maths/Phonics) & Snack 1 plus Toilet Time	Snack/Toilet Break
10:15 - 10:30					
10:30 - 10:45	Themed Activity 1				
10:45 - 11:00		Themed Activity 1	Themed Activity 1	Themed Activity 1	Themed Activity 2
11:00 - 11:15	Gym Play				
11:15 - 11:30	Themed Activity 2				
11:30 - 11:45		Gym Play			Themed Activity 3
11:45 - 12:00	Lunch		Physical Activity Period <small>(on Fitness Fridays this period may be swapped for another subject)</small>	Physical Activity Period <small>(on Fitness Fridays this period may be swapped for another subject)</small>	
12:00 - 12:15		Themed Activity 2			
12:15 - 12:30	Puppets/Story Time/ Nappies/Toilet		Lunch & Toilet Time	Lunch & Toilet Time	Lunch & Rest
12:30 - 12:45					
12:45 - 1:00	Cocoon Club <small>(nap or rest time – some children like to snooze, others like to enjoy quiet table activities, puzzles or play with a teacher)</small>	Lunch & Toilet Time			
1:00 - 1:15					Physical Education
1:15 - 1:30			Themed Activity 2	Themed Activity 2	
1:30 - 1:45	Gym Time/ Music Time	Themed Activity 3			Well Being/Yoga/Relaxation
1:45 - 2:00					
2:00 - 2:15		Music & Percussion Time (or alternative activity)	Final songs/ stories/games	Final songs/ stories/games	Themed Activity 4
2:15 - 2:30	Activity 3	Wind Down & Pack Up	Daily Reiteration, tidy-up and wind down.	Daily Reiteration, tidy-up and wind down.	
2:30 - 2:45	Wind Down & Pack Up Regular Collection Time is at 2:45 pm				
2:45 - 3:00	Snack/break period for after-school students		Wind Down & Pack Up	Wind Down & Pack Up	Review of the Day
3:00 - 4:00	After-School Classes				After-School Classes
4:00 - 5:00	After-School Classes				After-School Classes
5:00 - 6:00	Extension Hrs available in units of 1 hr, starting and finishing on the hour @ 2,000yen. No part charges.				After-School Classes or Extension Hr
6:00 - 7:00					Extension Hrs

Fees

Entrance Fees

Kspace Enrolled Members Only

No Registration Fee
Materials Fee ¥8,000 per child

Visitors

Summer School Registration Fee of ¥10,000 per child
Materials Fee ¥8,000 per child
Online Screening Fee for students unable to attend trial ¥15,000

Alternatively join as below and enjoy zero registration fee for future Spring, Summer & Winter School periods!
(Materials Fee still applies)

Kspace Main Membership @ ¥20,000yen

Or

Kspace Saturday Membership @ ¥40,000yen & ¥10,000 annual fee

Daily Attendance Fee

Mid Week	Time	Single Day
All age groups	9:00 am to 3:00 pm	¥13,000
	all-day option 9:00 am to 5:00 pm	¥17,000
Note: <ul style="list-style-type: none">•Saturday Fees: Saturday enrolled members can use their usual Saturday block tickets during Summer School and fees will remain the same as the rest of the year.•Let us know if you wish to receive a sample invoice/invoices obligation-free.•Consumption Tax of 10% will be added to all prices and fees quoted across this document.•There are no sibling discounts or discounts for repeat attendance and early payment.		

After School

¥3,000 per class for 1 hour sessions or ¥25,000 per block of 10 x 1hr classes

Private Tutorials (age 3+)

Academic & Extra Curricular Subjects @ ¥9,000 per class (1hr)
Initial assessment @¥14,000

One-to-one lessons are offered in a variety of subjects e.g. Maths, Reading, Writing, Phonics, English Language, Science, homework support and others.

Extension Hours

Breakfast Club 8:00 am to 9:00 am, ¥2,000

Afternoon Extension

5:00 pm to 6:00 pm, ¥2,000

6:00 pm to 7:00 pm, ¥2,000

Note: No part-time charges.

Extra Costs

Uniform

Regular T-shirt ¥3,500	Striped Shorts ¥6,000
Allergy Safety-Aware T-shirt ¥4,000	Striped Dress ¥8,000

Note: Uniform items are mandatory and must please be worn to each lesson. Children attending regularly will need more than one set of uniform. Prices listed throughout the brochure are exclusive of Japanese Consumption Tax, to be added @10%

Meals

Kiwi Kitchen's catering service (Monday to Friday)

Regular size meal: morning snack + lunch set @¥900

Large size meal: morning snack + lunch set @¥1,000

Afternoon snack: @¥300

Note:

- A later snack/meal can be ordered for children who extend their time with us.
- Kiwi Kitchen prices listed are inclusive of Japanese Consumption Tax @10%.
- Kiwi Kitchen's meals must be ordered in advance, by the Thursday before attendance. If the deadline is missed please send in meals from home prepared according to our policy.

Saturday School

Kspace Catering Morning snack & lunch @¥950

Afternoon Snack @¥350

Note: Prices listed are exclusive of Japanese Consumption Tax @10%

Fee & Attendance Notes

These are abbreviated policy points. Full details of service, rules and policies (including the current mid-pandemic health and travel policy) are included in the authorisations forms/starter pack. We must receive a signed and agreed copy of the authorisations forms from you before your child may attend Summer School.

Refunds, Make-ups and Credits

- No refunds are offered, without exception, including instances when families are unable to enter the country.
- In the case of any closure we will work with families to provide alternative dates or options first. If parents opt not to attend during an open period at the school, dates they give up might not be refunded.
- Summer School fees only apply to the Summer School 2024 period only. Fees/credit/days cannot be carried over if unused within the exact summer school period, in full or in part.
- Make-up days may be offered (within the Summer School period) if 2 days notice of absence is given in writing (only). Approval of make-up days is based upon space availability and is at the discretion of the school.
- Refunds/credits/lieu services are not offered if you mistake or miss attendance dates and for sick days. The School does not automatically send out attendance reminders to you so please kindly keep track of your booked dates, or contact our office.

Booking, Payment and Attendance

- Overseas families must prepay the ¥15,000 Overseas Admin & Communication Fee (per child) as soon as we contact you after your booking. The School will arrange a Zoom meeting and we must meet/see and interact with all prospective students and at least one parent. Note that this fee is retained in full by Kspace in the event that families are not offered a placement and/or if the family cancels.
- The Registration or Membership Fee (for new children) and Materials Fee (for all attendees) is charged regardless of how many days booked (from 1+) and is mandatory.
- Booking is made for specific dates in advance of attendance.
- Fees must be received prior to provision of services.
- The dates of attendance and fees are paid for a specific named child.
- If your child is younger than 3 years old and/or hasn't been placed in a child-only programme before, please contact us for our advice on the best attendance pattern.
- Positions are not secured until children's places have been verified by the School and payment has been received in full, in advance. We cannot reserve places unfortunately.

Communication

Summer School families have access to a fantastic password-controlled Members' website called 'Kokomo Club' that includes:

- ★ Videos
- ★ Theme updates
- ★ Newsletters

We invite parents to stay updated and like/follow/check-in and comment on our social media accounts.

Facebook: [@kspaceinternationalschool](#)

Instagram: [@kspaceinternational](#)



Please get to know our school mascots! Kokomo and Kokomama are part of the Koko family, very important aliens who love to join us occasionally for events calendar highlights, and even makes an appearance in class sometimes! You will see these cheeky, caring little characters in our brochures, and the children proudly wear Kokomo on their uniform T-shirts. Please get to know our school mascots on their profile page [Click here!](#)

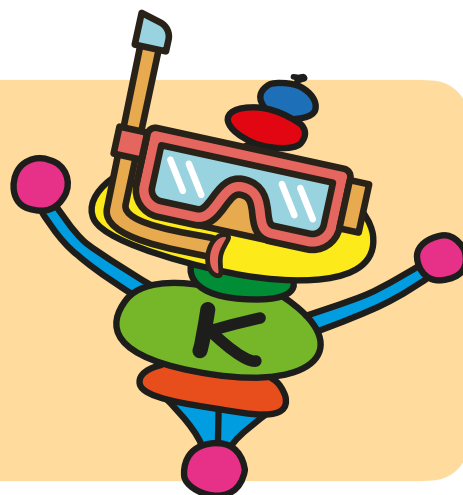


Saturday School

The fun doesn't stop on Saturdays! Please check out our amazing [Saturday programme here](#). This runs almost all year round and students who opt for Saturday Membership can also attend any dates outside the summer camp period.

Orientation Information

All details to prepare you well in advance for Summer School such as meal booking and packed lunch guidelines, uniform/T-shirt ordering details, things to bring, emergency contact information and website access passwords are sent a few weeks before the programme starts. The Summer Starter Pack is automatically forwarded to enrolled parents. Feel free to ask us any questions that you may have in the meantime.



Summer School F.A.Q

Q. When do we have to enroll?

Summer School is very popular with many return families, so please try to book very early in the year. We cannot reserve or guarantee places unless they are paid in advance.

Please note: We do not allow drop-ins.

Q. Is lunch provided or is it packed lunch?

Both options are available.

Packed Lunch: If your child has any allergies or needs a specific dietary menu you must provide a meal (plus snack/snacks). We have a very strict Food/Drink Policy that will be sent to you.

Q. My child is still toilet training. Can we join?

Yes, if your child is at an applicable and recognized age for continuing toilet training. Please talk to us about immersion programmes to settle your younger child. You will be asked to read and sign our Toilet Code.

Q. Are all these lessons in English?

Yes, instruction is only in English in the main summer programme. Our teachers are predominantly native English speakers from the U.K., Australia/New Zealand, Canada, America, some countries in Europe and other English speaking nations.

Q. Do children need to be able to speak English to be eligible?

Summer School at Kspace is open to applications from all children ages 14 months to 9 years old. Our attendees include native and fluent English speakers from our own international school and other international schools, visitors from overseas, plus ELL students and Japanese nationals with a range of incoming abilities. Nursery age groups do not have a specific language eligibility level but it helps if children are familiar with English and have had some exposure to it. Overseas applicant children all have a Zoom meeting/screening and applicants in Japan have a mandatory on-site paid trial, prior to the Summer School start date. These processes help us identify language needs. The course content is designed at a general level, ensuring that mid/intermediate and competent children can still enjoy and learn from it. Absolute beginners are welcome: During the application period we will recommend the best learning plan. Tailored English language support is available and fees will be advised. Please apply for details.

When we meet and observe your child we will discuss their background and incoming level, and pass our language/support recommendations to you. Residents in Tokyo benefit greatly from attendance in our regular extracurricular and ELL courses leading up to Summer School.

Summer After School

We run amazing After School extracurricular classes in summer. You can buy blocks of sessions and add from 3.00pm onwards to your child's summer school experience. Or, if your child attends our 'All Day' programme, sessions until 5.00pm are included in your 'all day' fee.

PRIVATE TUTION

1 - 1 tutoring is also available in Summer School, with advance booking. We offer lessons in a range of academic subjects, some languages, a variety of music instruments and also vocal coaching. Private tuition is offered 6 days per week. Please enquire about tutor's schedules and availability.

After School Timetable

July 22nd to August 17th, 2024

The schedule is below but may be subject to change

	Monday	Tuesday	Wednesday	Thursday	Friday	Saturday
Tiny Trekkers (14 months to 3 years)	3:00pm Number Rhymes 4:00pm Early Science	3:00pm Art 4:00pm Pre-Phonics	3:00pm Drumming 4:00pm Crazy Dough	3:00pm Science 4:00pm Ball Games	3:00pm Pre-Phonics 4:00pm Painting Club	2:00pm Pre-Phonics 3:00pm Art 4:00pm English Language
Secret Scouts (3 to 4 years)	3:00pm Broadway Dance 3:00pm Phonics 4:00pm Art	3:00pm Science 4:00pm Painting	3:00pm Phonics 4:00pm Slime Club	3:00pm Hip Hop 3:00pm Maths 4:00pm Young Engineers	3:00pm Superheroes Club 4:00pm Music	2:00pm Hip Hop 2:00pm Football 3:00pm Art 4:00pm English Language
Good Guides (4 to 6 years)	3:00pm Sculpture 3:00pm Maths 4:00pm Phonics 4:00pm Football	3:00pm Gymnastics 3:00pm Interview Practice 4:00pm Science	3:00pm Art 3:00pm English Language 4:00pm Dress Up and Story Telling 5:00pm Sunsplash	3:00pm Boxing 4:00pm Hip Hop 4:00pm Singapore Maths	3:00pm Ninja Club 3:00pm Art 4:00pm Cooking 4:00pm Science	2:00pm Phonics 2:00pm Hip Hop 3:00pm Singapore Maths 4:00pm English Language
Lively Leaders (7 to 8 years) Campfire Captains (8 to 9 years)	3:00pm Bread Making 4:00pm Sculpture 5:00pm Biology	3:00pm Science 4:00pm Gymnastics 4:00pm Chess	3:00pm Fashion Designers 3:00pm Young Astronauts 4:00pm Art 5:00pm Sunsplash	3:00pm Painting 3:00pm Boxing 4:00pm Kapla 4:00pm Hip Hop	3:00pm Ukulele Club 3:00pm Painting 4:00pm Science 4:00pm Football	3:00pm ESL 4:00pm Phonics 5:00pm Creative Art

Extracurricular classes often have talented guest and specialist teachers and we want to plan the best for your child. Some details may change after brochure release, so please kindly check with the school for any updates.



Summer School Uniform

	Summer/Autumn T-Shirt	Summer Only April 5th to October 30th
Tiny Trekkers	<p>Yellow T-shirt</p> 	<p>Striped Shorts (Yellow)</p> 
Tiny Trekkers	<p>Orange T-shirt</p> 	<p>Striped Shorts (Orange)</p> 
Secret Scouts	<p>Pink T-Shirt</p> 	<p>Striped Shorts or Dress (Pink)</p> 
Secret Scouts	<p>Red T-shirt</p> 	<p>Striped Shorts or Dress (Red)</p> 
Good Guides	<p>Green T-shirt</p> 	<p>Striped Short or Dress (Green)</p> 
Lively Leaders Campfire Captains	<p>Purple T-shirt</p> 	<p>Striped Shorts or Dress (Purple)</p> 

PRICES

Regular T-shirt ¥3,500

Allergy Safety-Aware T-shirt ¥4,000

Striped Shorts ¥6,000

Striped Dress ¥8,000

Note: Uniform items are mandatory and must please be worn to each lesson.
Prices listed are exclusive of Japanese Consumption Tax, to be added @10%

SIZES

100

110

120

130

140

150

► **Online Order Form**

★ Summer Uniform



Examples (Not for sale at Kspace)



Uniform Indoor Shoes

- Only plimsolls/上履き are permitted inside the school.
PLEASE DO NOT PROVIDE ANY OTHER STYLE OF INDOOR FOOTWEAR.
- White or Black

- Students' hair must be very neat, off the face at all times and in keeping with our term-time student appearance code. (Applies to boys and girls)
- Hair must be natural colour.
- Nails must be free of nail polish and we do not allow make-up.
- Please do not provide designer, brand wear and 'party style' shoes for outdoor shoe wear. Outdoor shoes must be slip on with a sports style sole and suitable for PE and activewear.