

14 months to 9 yrs
Open Mon-Sat +
After School Options

Kspace



SUMMER SCHOOL 2023

Monday July 17th to Saturday August 19th*

***Summer School extension August 23rd to September 8th**

A Brilliant Adventure:

From the deepest seas to the highest mountains, with our crazy tour guides!



BOOK NOW
www.kspacetokyo.org

Group Names

Little Lobsters
(14 months to 3 years)

Turtles
(3 to 4 years)

Pearls
(4 to 6 years)

Pirates
(7 to 8 years)

Tritons
(8 to 9 years)

Note: We will place children in their appropriate group. Class selection will depend on language ability & date of birth/age as of August 31st in 2022.

Hi I'm Kokomo, one of the Kspace mascots.
We hope you find the info. you need in this brochure.
We can't wait to spend summer with your child!



Programme and Service Options

Regular Day

14 months to 9 years: Monday through Saturday. 9:00 am to 3:00 pm

Note: Drop off and collection times may be slightly staggered during the pandemic to avoid congestion near the school.

Extension Hours

Morning and Afternoon extension hours can be booked to extend your child's regular day.

- **Breakfast Club**

8:00 am to 9:00 am - Booked/paid in fixed units of 1hr.

If you would like your child to eat before their classes start, please supply their breakfast.

- **Afternoon Extension Hours**

5:00 pm to 6:00 pm / 6:00 pm to 7:00 pm

Afternoon Extensions are booked/paid in units of 1 hour.

After School Classes

14 months to 9 years: Monday through Saturday. 3:00 pm to 5:00/6:00 pm

After school classes run for 1 hour each for 14 months to 9 year old students. Children can add after school classes to their regular day or *attend after school only

After school classes run for 1 hour.

Private 1-1 Tuition (Music & Academic)

3 years +

1-to-1 tuition can be added to your child's attendance periods during the morning or afternoons from Monday to Saturday, or they can come for private tuition only. All new students start with a 1hr assessment. Sessions are booked in advance, in blocks. Please contact us for times and tutor availability.

Meals (Catered Lunches)



Monday to Friday: Order online from Kiwi Kitchen. You will be invoiced separately. <https://kiwikitchen.com>

Saturday: Order online from Kspace and pay in cash at drop-off.

Packed snack and lunches from home are also allowed and must be prepared to our Prohibited Food Policy.

Note: All details regarding dates and details for ordering meals, things to bring, packed lunch guide and food policies are sent in our Summer Starter Pack to enrolled parents.

Calendar

Each week our Regular Programme (9.00am to 3.00pm) has a key theme, and every day has a balance of activities plus an area of focus.

JULY

MONDAY	TUESDAY	WEDNESDAY	THURSDAY	FRIDAY	SATURDAY
17 Marine Day Sports & Games	18 Music, Drama & Phonics	19 Geography & Cookery	20 Art & Design	21 Science Exploration	22 Variety
Week 1: Deep Dive into Atlantica					
24 Sports & Games	25 Music, Drama & Phonics	26 Geography & Cookery	27 Art & Design	28 Science Exploration	29 Variety
Week 2: Peter Pan to Neverland					
31 Sports & Games					
Week 3: Madagascar with Friends					

AUGUST/SEPTEMBER

MONDAY	TUESDAY	WEDNESDAY	THURSDAY	FRIDAY	SATURDAY
	1 Music, Drama & Phonics	2 Geography & Cookery	3 Art & Design	4 Science Exploration	5 Variety
Week 3: Madagascar with Friends					
7 Sports & Games	8 Music, Drama & Phonics	9 Geography & Cookery	10 Art & Design	11 Science Exploration	12 Variety
Week 4: Return to Volcano Island with Ninja Turtles					
14 Sports & Games	15 Music, Drama & Phonics	16 Geography & Cookery	17 Art & Design	18 Science Exploration	19 Variety
Week 5: Mountains, Mushrooms and Super Mario!					
21 CLOSED	22 CLOSED	23 Term-Time Summer Programme	24 Term-Time Summer Programme	25 Term-Time Summer Programme	26 Variety
Week 6: Extension Week					Saturday Themes
28 Term-Time Summer Programme	29 Term-Time Summer Programme	30 Term-Time Summer Programme	31 Term-Time Summer Programme	1 Term-Time Summer Programme	2 Variety
Week 7: Extension Week					Saturday Themes
3 Term-Time Summer Programme	4 Term-Time Summer Programme	5 Term-Time Summer Programme	6 Term-Time Summer Programme	7 Term-Time Summer Programme	8 Variety
Week 8: Extension Week					Saturday Themes

Summer School at Kspace is the best way for children to have a real 'break away' from their regular schedule and ensure memorable experiences for the summer of 2023! Kspace International School assures busy and working parents support throughout the holidays with easy booking, continuity and a warm and friendly atmosphere.

We invite children for top quality lessons, fun, and our own special blend of Kspace 'edutainment' this summer. Your child can join us for a real roller coaster ride of fun, frivolity and a great balance of academic subjects too, to make each day count this summer holiday!

The fun doesn't stop after our regular day as we continue with extra-curricular classes right up until 5.00pm and our late-stayers enjoy quality care until 7.00pm.

Health Note: Information may be subject to change due to rapid developments with COVID-19.

Content

Our theme for 2023 is a swashbuckling mixture that draws inspiration from many classic and new-release movies, plus books that children really love. Our adventurous city kids enjoy an insight into 'island life' through land, sea and mountain exploration. They will discover 'island life' and countries and cultures through music, dance, sports and games, science, cookery and of course lots of art projects!

The programme is delivered in English, in our special Kspace style - lots of music, props, puppets, costumes fun and variety! We achieve a summer camp atmosphere with seasonal and activities that encourage the children to bond with one another and learn more rapidly. We also aim to get the children onto our rooftop as much as possible to enjoy the fresh air and team games.

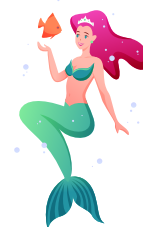
The children's daily experiences include a well-balanced range of activities including Music/Circle Time and Morning Meeting, P.E., games, Phonics, lots of creative projects and themed highlight periods.

July

Week 1: Monday 17th to Saturday 22nd - Deep Dive into Atlantica

Deep below the oceans lie some fascinating creatures and places, plus the promise of lost cities. The children jump aboard a state-of-the-art vessel and navigate the waves in search of a city like Atlantis, discovering real and magnificent wonders along the way.

Highlight: We kick off with special celebrations for Monday 17th, Marine Day, guided by mermaids and tritons.



Week 2: Monday 24th to Saturday 29th - Peter Pan to Neverland

The free spirited Peter Pan had two characteristics that most of us wished we possessed, flying and never growing up. Growing up is inevitable....flying however is possible! This week our children join Peter Pan, Tink and the motley crew of the Lost Boys for some fun antics!



August

Week 3: Monday 31st July to Saturday 5th - Madagascar with Friends

Welcome to Madagascar, a fascinating island off the eastern coast of Africa. The history of this large island is filled with pirates, dinosaurs and of course the amazing endemic animals that exist nowhere else in the world. We join some really crazy critters like lemurs and aye-ayes, investigate all creatures great and small, and eat some truly delicious food!



Week 4: Monday 7th to Saturday 12th - Return to Volcano Island with Ninja Turtles

We start our journey deep in New York City, where a bold group of teenagers are about to set off on the trip of their lives. Join our Ninja Mutant Turtles as they enjoy the best of city life, rediscover their giant ancestors, and trek across the Galapagos Islands.



Week 5: Monday 14th to Saturday 19th - Mountains, Mushrooms and Super Mario

Fast and furious rides, massive mushrooms and magic moments make up the content of this week! From the peaks of Mt. Fuji to the winding roads of The Alps, our children will accompany Super Mario and his friends as they race across the globe.

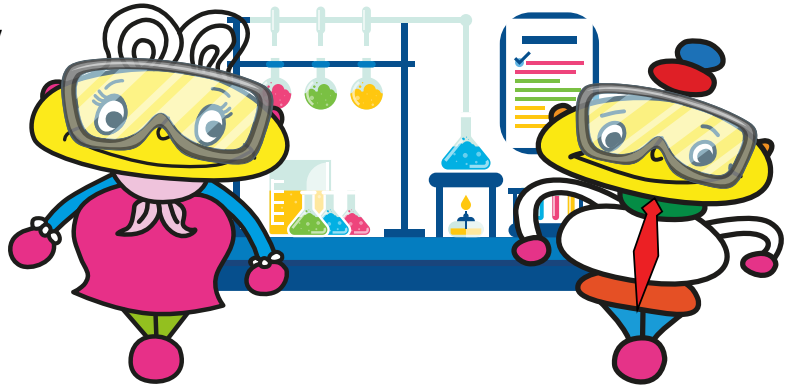


Content

Every day at Kspace has a special selection of fun!

Sports & Games Mondays

Children of all ages love to let off steam, particularly in summer! Sports & Games Mondays offer a funky range of sports, obstacle courses, team games, challenges, and physical fun that the kids won't be able to get enough of! Kspace has a beautifully equipped soft-gym, soft-floor rooftop with a custom-designed sun-awning and water-play equipment, plus a huge range of fantastic tools to build fantasy worlds for funky fitness!



Dates: July 17th, 24th & 31st. August 7th & 14th.

Highlight: July 17th Marine Day (Umi no Hi).

Note: Closed Mon August 21st

Music, Drama & Phonics Tuesdays

Role-play is very popular with children and dramatic play has been proven to be a great way to learn! All four age groups have a special age-appropriate theme and content on 'Music & Drama Tuesdays' that ranges from world music, percussion time, teaching/interacting with puppets, make believe play, situation role-play, acting in pairs, small skits and even learning mini-dances! We make each class come to life with a lovely range of props, costumes, backdrops, toys and materials to create a memorable and rewarding experiences.



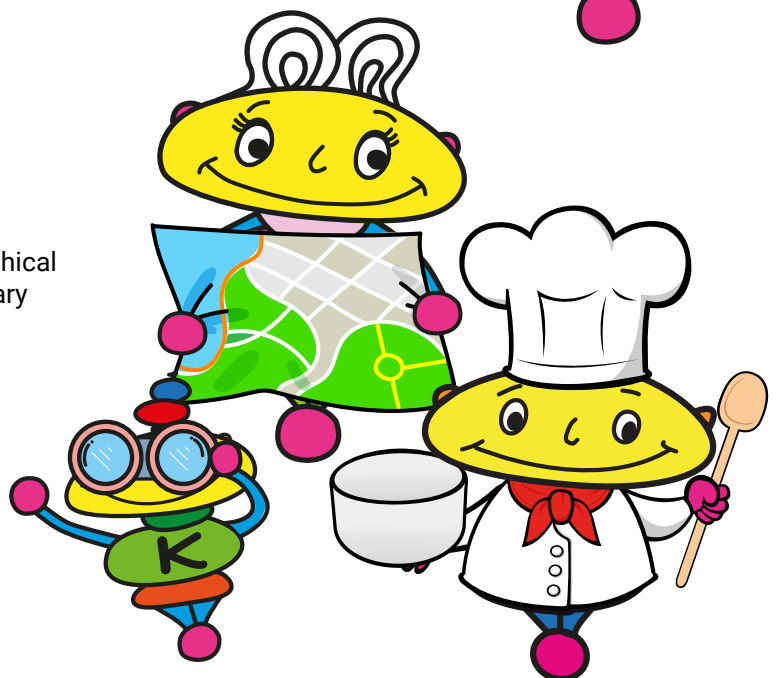
Dates: July 18th, 25th. August 1st, 8th & 15th

Note: Closed August 22nd

Geography & Cooking Wednesdays

Across the weeks we learn about some great geographical facts and match our knowledge with tasting the culinary treasures of our discovered lands!

Dates: July 19th, 26th. August 2nd, 9th & 16th



Art & Design Thursdays

Kspace is famous for its variety of creative arts and in summer we have some spectacular projects for the kids!

We cover everything from large-scale mural art to individual pieces. Children love having the freedom to use materials generously, and the extraordinary variety of mediums we use goes beyond what they are normally exposed to. Projects are sensory based and fabulous fun with discovery of something magical every week!

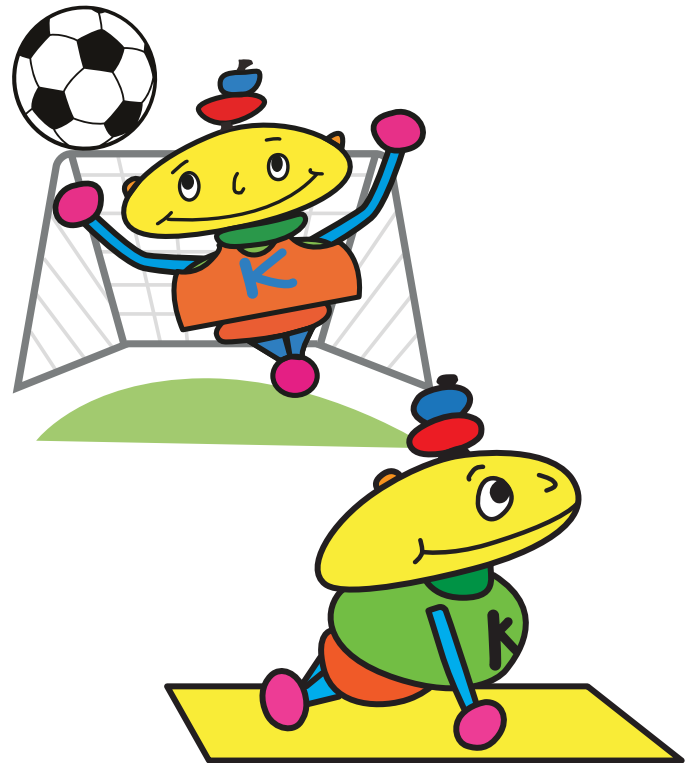
Dates: July 20th, 27th. August 3rd, 10th & 17th



Science Exploration Fridays

Even the youngest children can enjoy explorative, hands-on, science based fun at Kspace! Fridays are for mini and midi-scientists, and our teachers take the children through some projects that will enhance their knowledge and make them even more curious about the world around them! Kids love to explore and inquire - they like things that bubble, fizz, whizz and pop! Science Exploration Fridays cover a wide range of subjects.

Dates: July 21st, 28th. August 4th, 11th & 18th



Saturday School

The fun doesn't stop on Saturdays! Kspace is open every Saturday, and we can combine Saturday School with your regular Summer School plan, or attend them alone.

For EFL/English Language Learners

ESL/ELL students are welcome in the Summer School period. All new students start with a paid trial before Summer School so we can assess language skills, and our ESL specialists can check incoming level and recommend specific attendance patterns and courses. Our activities in summer school are aimed at teaching/improving language. We also recommend adding ESL/EFL After School classes, private tutorials and Saturday School for extra study - particularly for English beginners age 3yrs+.

Please also ask us about our Summer Extension, offering an extra opportunity to boost language skills. This runs when our regular Summer School finishes.



SUMMER SCHOOL TIMETABLE

Children attending Summer School until August 19th enjoy a cross range of themed activities, as below. In Summer School Extension (ages 14 months to 9 years) from August 23rd onwards children enjoy a schedule more in line with term-time, with a balance of music, arts and crafts, academic learning and age appropriate fun activities.

	Little Lobsters (14 months to 3 years)	Turtles (3 to 4 years)	Pearls (4 to 6 years)	Pirates (7 to 8 years)	Tritons (8 to 9 years)
8:00 - 9:00	Optional Breakfast Club				
9.00 am	Regular Drop Off* <small>*Staggered drop-off time TBA</small>				
9:00 - 9:15					Registration & Morning Meeting
9:15 - 9:30					
9:30 - 9:45	Themed Circle Time	Themed Circle Time	Morning Meeting & Themed Circle Time	Morning Meeting & Themed Circle Time	Activity 1
9:45 - 10:00					
10:00 - 10:15	Story Time plus Snack/Toilet Time	Story Time plus Snack/Toilet Time	Focus Period (Maths/Phonics) & Snack 1 plus Toilet Time	Focus Period (Maths/Phonics) & Snack 1 plus Toilet Time	Snack/Toilet Break
10:15 - 10:30					
10:30 - 10:45	Themed Activity 1				
10:45 - 11:00		Themed Activity 1	Themed Activity 1	Themed Activity 1	Activity 2
11:00 - 11:15	Gym Play				
11:15 - 11:30	Themed Activity 2				
11:30 - 11:45		Gym Play			
11:30 - 11:45			Physical Activity Period <small>(on Fitness Fridays this period may be swapped for another subject)</small>	Physical Activity Period <small>(on Fitness Fridays this period may be swapped for another subject)</small>	Activity 3
11:45 - 12:00	Lunch				
12:00 - 12:15		Themed Activity 2			
12:15 - 12:30	Puppets/Story Time/ Nappies/Toilet		Lunch & Toilet Time	Lunch & Toilet Time	Lunch & Rest
12:30 - 12:45					
12:45 - 1:00	Cocoon Club <small>(nap or rest time – some children like to snooze, others like to enjoy quiet table activities, puzzles or play with a teacher)</small>	Lunch & Toilet Time			
1:00 - 1:15					Physical Education
1:15 - 1:30			Themed Activity 2	Themed Activity 2	
1:30 - 1:45	Gym Time/ Music Time	Themed Activity 3			Well Being/Yoga/Relaxation
1:45 - 2:00					
2:00 - 2:15			Final songs/ stories/games	Final songs/ stories/games	
2:15 - 2:30	Activity 3	Music & Percussion Time (or alternative activity)			Activity 4
2:30 - 2:45			Daily Reiteration, tidy-up and wind down.	Daily Reiteration, tidy-up and wind down.	
2:45 - 3:00	Wind Down & Pack Up	Wind Down & Pack Up	Wind Down & Pack Up	Wind Down & Pack Up	Review of the Day
Regular Collection Time is at 3:00 pm					
3:00 - 4:00	After-School Classes				After-School Classes
4:00 - 5:00	After-School Classes				After-School Classes
5:00 - 6:00	Extension Hrs available in units of 1 hr,				After-School Classes
6:00 - 7:00	starting and finishing on the hour @ 2,000yen. No part charges.				Extension Hrs

Fees

Entrance Fees

Kspace Enrolled Members

No Registration Fee

Materials Fee ¥8,000 per child

Visitors

Summer School Registration Fee ¥10,000 per child

Materials Fee ¥8,000 per child

Alternatively, children who are eligible for attendance at Kspace programmes mid-term time, or intend to return for future Spring, Summer & Winter School periods, can join as below to benefit on future registration fee savings. Please ask us if your child's age group applies.

Kspace Main Membership Fee ¥20,000

Kspace Main Membership Fee ¥20,000. Covers midweek membership to After-School, Private Tutorials and Seasonal Programmes, plus general community events.

50% Sibling discount offered for additional sibling's membership fee for parents opting to purchase this type of membership.

Saturday School Membership Fee ¥40,000 per child + ¥10,000 pro-rated Annual Fee

Covers Saturday membership for Saturday School Programme, Seasonal Programmes (all), Saturday After School, Saturday Private Tuition and community events.

Daily Attendance Fee

Midweek	Time	Single Day
14 mths to 9 years	9:00 am to 3:00 pm	¥13,000
	All-day option 9:00 am to 5:00 pm	¥16,000

Notes:

Unfortunately we do not offer discounts for daily attendance fees for siblings or for block bookings in summer and winter school. Saturday enrolled members can use prepaid Saturday tickets for Saturday dates (not midweek) in Summer School. These tickets and the service hours they cover will remain the same as the rest of the year

AFTER SCHOOL FEES

¥3,000 per class for 1 hour sessions or ¥25,000 per block of 10 x 1hr classes

PRIVATE TUITION FEES

Academic & Extra Curricular Subjects

¥12,000 initial assessment (1hr)

¥8,000 per class (1 hour)

One-to-one lessons offered in a variety of subjects e.g. Maths, Reading, Writing, Phonics, English Language, Science, homework support and others.

Music Classes

*¥5,500 to ¥10,000 per class (30 min or 1hr classes)

One-to-one lessons with a professional music teacher.

Private Tuition Notes: Subject to tutor availability & schedule.

Tutors may have fixed minimum session periods and block booking in advance may be needed. Please enquire for more details.

EXTENSION HOURS

Breakfast Club

8:00 am to 9:00 am, ¥2,000

Afternoon Extension

5:00 pm to 6:00 pm, ¥2,000

6:00 pm to 7:00 pm, ¥2,000

Note: No part-time charges.

Extra Costs

Uniform

Regular T-shirt ¥3,500

Allergy Safety-Aware T-shirt ¥4,000

Striped Shorts ¥6,000

Striped Dress ¥8,000

Note: Uniform items are mandatory and must please be worn to each lesson.

Children attending regularly will need more than one set of uniform.

Prices listed throughout the brochure are exclusive of Japanese Consumption Tax, to be added @10%

Meals

Kiwi Kitchen's catering service (Monday to Friday)

Regular size meal: morning snack + lunch set @¥850

Large size meal: morning snack + lunch set @¥950

Afternoon snack: @¥300

Note:

- A later snack/meal can be ordered for children who extend their time with us.
- Kiwi Kitchen prices listed are inclusive of Japanese Consumption Tax @10%.
- Kiwi Kitchen's meals must be ordered in advance, by the Thursday before attendance. If the deadline is missed please send in meals from home prepared according to our policy.

Saturday School Kspace Catering

Morning snack & lunch @¥850

Afternoon Snack @¥300

Note: Prices listed are inclusive of Japanese Consumption Tax @10%

Fee & Attendance Notes

These are abbreviated policy points. Full details of service, rules and policies (including the current mid-pandemic health and travel policy) are included in the authorisations forms/starter pack. We must receive a signed and agreed copy of the authorisations forms from you before your child may attend Summer School.

Refunds & Make-ups

- No refunds are offered, unless the school is mandated (or chooses) to close due to the pandemic and withdraws all services for the full summer school period.
- In the case of any closure we will work with families to provide alternative dates or options first. If parents opt not to attend during an open period at the school, dates they give up might not be refunded.
- Summer School fees only apply to the Summer School 2023 period only.
Fees/credit/days cannot be carried over if unused, in full or in part
- Make-up days may be offered (within the Summer School period) if 2 days notice of absence is given in writing (only). Approval of make-up days is based upon space availability and is at the discretion of the school.
- Refunds/credits/lieu services are not offered if you mistake or miss attendance dates and for sick days. The School does not automatically send out attendance reminders to you so please kindly keep track of your booked dates, or contact our office.

Attendance Notes

- The Registration or Membership Fee (for new children) and Materials Fee (for all attendees) is charged regardless of how many days booked (from 1+) and is mandatory.
- Booking is made for specific dates in advance of attendance.
- Fees must be received prior to provision of services.
- The dates of attendance and fees are paid for a specific named child.
- If your child is younger than 3 years old and/or hasn't been placed in a child-only programme before, please contact us for our advice on the best attendance pattern.

	Summer/Autumn T-Shirt	Summer Only April 5th to October 30th
Little Lobsters	<p>Yellow T-shirt</p> 	<p>Striped Shorts (Yellow)</p> 
Little Lobsters	<p>Orange T-shirt</p> 	<p>Striped Shorts (Orange)</p> 
Turtles	<p>Pink T-Shirt</p> 	<p>Striped Shorts or Dress (Pink)</p> 
Turtles	<p>Red T-shirt</p> 	<p>Striped Shorts or Dress (Red)</p> 
Pearls	<p>Green T-shirt</p> 	<p>Striped Short or Dress (Green)</p> 
Pirates Trions	<p>Purple T-shirt</p> 	<p>Striped Shorts or Dress (Purple)</p> 

PRICES

Regular T-shirt ¥3,500

Allergy Safety-Aware T-shirt ¥4,000

Striped Shorts ¥6,000

Striped Dress ¥8,000

Note: Uniform items are mandatory and must please be worn to each lesson.
Prices listed are exclusive of Japanese Consumption Tax, to be added @10%

SIZES

100

110

120

130

140

150

► **Online Order Form**

★ Summer Uniform



Examples (Not for sale at Kspace)



Uniform Indoor Shoes

- Only plimsolls/上履き are permitted inside the school.
PLEASE DO NOT PROVIDE ANY OTHER STYLE OF INDOOR FOOTWEAR.
- White or Black



The policy for mask wearing is generally in line with Government recommendations, however up-to-date details will be sent in your Summer Starter Pack

Summer After School

We run amazing After School extracurricular classes in summer. You can buy blocks of sessions and add from 3.00pm onwards to your child's summer school experience. Or, if your child attends our 'All Day' programme, sessions until 5.00pm are included in your 'all day' fee.

PRIVATE TUTION

1 - 1 tutoring is also available in Summer School, with advance booking. We offer lessons in a range of academic subjects, some languages, a variety of music instruments and also vocal coaching. Private tuition is offered 6 days per week. Please enquire about tutor's schedules and availability.

After School Timetable

Summer School Part 1 (July 17th to August 19th, 2023)

The schedule is below but may be subject to change
We are closed on August 21st and 22nd.

Summer School Part 2 (August 23rd to September 8th, 2023)

The after school selection for August 23rd onwards is released separately.

	Monday	Tuesday	Wednesday	Thursday	Friday	Saturday
Little Lobsters (14 months to 3 years)	3:00pm Cooking 4:00pm Number Rhymes	3:00pm Art 4:00pm Cooking	3:00pm Drumming 4:00pm Crazy Dough	3:00pm Science 4:00pm Ball Games	3:00pm Pre-Phonics 4:00pm Painting Club	2:00pm Pre-Phonics 3:00pm Art 4:00pm English Language
Turtles (3 to 4 years)	3:00pm Broadway Dance 3:00pm Phonics 4:00pm Art	3:00pm Biology Basics 4:00pm Painting	3:00pm Phonics 4:00pm Science	3:00pm Hip Hop 3:00pm Maths 4:00pm Young Engineers	3:00pm Magic Club 4:00pm World Rhythms	2:00pm Hip Hop 2:00pm Football 3:00pm Art 4:00pm English Language
Pearls (4 to 6 years)	3:00pm Broadway Dance 3:00pm Maths 4:00pm Sculpture	3:00pm Cooking 3:00pm Interview Practice 4:00pm Science	3:00pm Ice Art 3:00pm Football 4:00pm Insect Investigator	3:00pm Young Engineers 4:00pm Hip Hop 4:00pm Singapore Maths	3:00pm Boxing 3:00pm Jewellery Making 4:00pm Painting 4:00pm Bread Making	2:00pm Cooking 2:00pm Phonics 2:00pm Hip Hop 3:00pm Singapore Maths 4:00pm English Language
Pirates & Tritons (7 to 8 years) (8 to 9 years)	3:00pm Cooking 4:00pm Sculpture 4:00pm Broadway Dance	3:00pm Science 4:00pm Cooking	3:00pm Young Engineers 4:00pm Fitness Club 5:00pm Art	3:00pm Painting 3:00pm Biology 4:00pm Kapla 4:00pm Hip Hop	3:00pm Jewellery Making 3:00pm Bread Making 4:00pm Boxing 4:00pm Painting	2:00pm Cooking 3:00pm ESL 4:00pm Phonics 5:00pm Creative Art

Extracurricular classes often have talented guest and specialist teachers and we want to plan the best for your child. Some details may change after brochure release, so please kindly check with the school for any updates.

Communication

Summer School families have access to a fantastic password-controlled Members' website called 'Kokomo Club' that includes:

- ★ Videos
- ★ Theme updates
- ★ Newsletters

We invite parents to stay updated and like/follow/check-in and comment on our social media accounts.

 [@kspaceinternationalschool](https://www.facebook.com/kspaceinternationalschool)

 [@kspaceinternational](https://www.instagram.com/kspaceinternational)



Please get to know our school mascots! Kokomo and Kokomama are part of the Koko family, very important aliens who love to join us occasionally for events calendar highlights, and even makes an appearance in class sometimes!

You will see these cheeky, caring little characters in our brochures, and the children proudly wear Kokomo on their uniform T-shirts.

Please get to know our school mascots on their profile page [Click here!](#)



Saturday School

The fun doesn't stop on Saturdays!

Please check out our amazing Saturday programme [here](#). This runs almost all year round and students who opt for Saturday Membership can also attend any dates outside the summer camp period.

Orientation Information

All details to prepare you well in advance for Summer School such as meal booking and packed lunch guidelines, uniform/T-shirt ordering details, things to bring, emergency contact information and website access passwords are sent a few weeks before the programme starts. The Summer Starter Pack is automatically forwarded to enrolled parents. Feel free to ask us any questions that you may have in the meantime.

