

14 months to 9 yrs
Open Mon-Sat +
After School Options

Kspace

Summer School 2022

July 18th to August 20th

Summer Extension Aug 24th to Sept 2nd

Fantastic Beasts & Magical Places



BOOK NOW
www.kspacetokyo.org



Group Names

Gremlins
(14 months to 3 years)

Mermaids
(3 to 4 years)

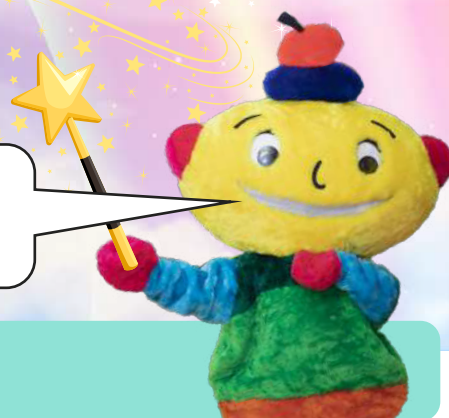
Unicorns
(4 to 6 years)

Dragons
(6 to 8 years)

Thunderbirds
(8 to 9 years)

Note: Children aged 3+ will be placed in their appropriate group by a teacher.
Class selection will depend on language ability & date of birth/age as of August 31st in 2022.

Hi I'm Kokomo, one of the Kspace mascots.
We hope you find the info. you need in this brochure.
We can't wait to spend summer with your child!



Programme and Service Options

Regular Day

14 months to 9 years: Monday through Saturday. 9:00 am to 3:00 pm

Note: Drop off and collection times may be slightly staggered during the pandemic to avoid congestion near the school.

Extension Hours

Morning and Afternoon extension hours can be booked to extend your child's regular day.

- **Breakfast Club**

8:00 am to 9:00 am - Booked/paid in a fixed units of 1hr.

If you would like your child to eat before their classes start, please supply their breakfast.

- **Afternoon Extension Hours**

5:00 pm to 6:00 pm / 6:00 pm to 7:00 pm

Afternoon Extensions are booked/paid in units of 1 hour.

After School Classes

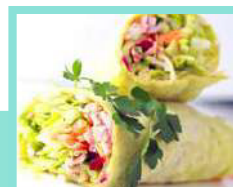
14 months to 9 years: Monday through Saturday. 3:00 pm to 5:00/6:00 pm

After school classes run for 1 hour each for 14 months to 9 year old students. Children can add after school classes to their regular day or *attend after school only.

Private 1-1 Tuition (Music & Academic)

3 years +

1 to 1 tuition can be added to your child's attendance periods during the morning or afternoon from Monday to Saturday, or they can come for private tuition only. Contact us for times and tutor availability.



Meals (Catered Lunches)

Monday to Friday: Order online from Kiwi Kitchen. You will be invoiced separately. <https://kiwikitchen.com>

Saturday: Order online from Kspace and pay in cash at drop-off.

Packed snack and lunches from home are also allowed and must be prepared to our Prohibited Food Policy.

Note: All details regarding dates and details for ordering meals, things to bring, packed lunch guide and food policies are sent in our Summer Starter Pack to enrolled parents.

Calendar



Each week our Regular Programme (9.00am to 3.00pm) has a key theme, and every day has a balance of activities plus an area of focus.

JULY

MONDAY	TUESDAY	WEDNESDAY	THURSDAY	FRIDAY	SATURDAY
18 Science Highlight: Umi no Hi/Marine Day celebrations	19 Music, Drama & Phonics	20 Geography & Exploration	21 Art & Design	22 Sports & Games	2 Variety
Week 1: Lakes & Lochs					
25 Science	26 Music, Drama & Phonics	27 Geography & Exploration	28 Art & Design	29 Sports & Games	30 Variety
Week 2: Dusty Deserts					

AUGUST/SEPTEMBER

MONDAY	TUESDAY	WEDNESDAY	THURSDAY	FRIDAY	SATURDAY
1 Science	2 14mths to 8yrs: Music, Drama & Phonics	3 Geography & Exploration	4 Art & Design	5 Sports & Games	6 Variety
Week 3: Chaotic Cities					
8 Science	9 Music, Drama & Phonics	10 Geography & Exploration	11 Art & Design Highlight: Mountain Day	12 Sports & Games	13 Variety
Week 4: Fantasy Forests					
15 Science	16 Music, Drama & Phonics	17 Geography & Exploration	18 Art & Design	19 Sports & Games Highlight: End of Theme Party	20 Variety
Week 5: Fantasia Finale					
22 CLOSED	23 CLOSED	24 Term-Time Summer Programme	25 Term-Time Summer Programme	26 Term-Time Summer Programme	27 Variety
Week 6: Extension Week					Saturday Themes
29 Term-Time Summer Programme	30 Term-Time Summer Programme	31 Term-Time Summer Programme	1 Term-Time Summer Programme	2 Term-Time Summer Programme	
Week 7: Extension Week					

Summer School at Kspace is the best way for children to have a real 'break away' from their regular schedule and ensure memorable experiences for the summer of 2022! Kspace International School assures busy and working parents support throughout the holidays with easy booking, continuity and a warm and friendly atmosphere.

We invite children for top quality lessons, fun and 'edutainment' this summer. They join us for a magic laden trips to faraway places, meeting some really fantastic beasts and characters along the way. Colourful characters from beloved movies and books make an appearance to keep the summer camp atmosphere exciting, and children enjoy daily memorable experiences.

The fun doesn't stop after our regular day as we continue with extra-curricular classes right up until 5.00pm and our late-stayers enjoy quality care until 7.00pm.

Health Note: Information may be subject to change due to rapid developments with COVID-19.



Weekly Themes

Our experiences include special daily highlight periods focused on sports and games, science, drama and of course lots of art projects. We also have time for some good old mathematics and phonics, and across the weeks our young 'magizooologists' learn magical facts that are fantastical!

July

Week 1: Monday 18th to Saturday 23rd - Lakes and Lochs

Merpeople, genies, sunken treasure and is the Loch Ness Monster real? This week we visit some valleys and fjord like bodies of green and icy water that hold many secrets and are home to fables across the world.

Highlight: We kick off with special celebrations for Monday 18th, Marine Day.



Week 2: Monday 25th to Saturday 30th - Dusty Deserts

Egypt, the land of deserts, Alexandria, majestic buildings and amazing mystical beasts, sets the scene for us to find out about the Sphinx and Phoenix, and real world creatures that can survive in amazingly hot conditions.



August

Week 3: Monday 1st to Saturday 6th - Chaotic Cities

London, New York and Paris....are these the places where magic and fantastic creatures can be found? This week our magizooologists are on a mission to uncover real and fantasy critters that we might be sharing our dwellings with, and what is hiding right beneath our feet!



Week 4: Monday 8th to Saturday 13th - Fantasy Forests

From unicorns to hummingbirds and even real squirrels that can fly, this week we take a trip into the forbidden forest for a deep trek into nature and all things wild and wonderful! On our way we'll meet stick insect type creatures, Forest Nymphs and Thunderbirds, trolls and giants.



Highlight: This Art & Design Thursday we also celebrate 'Mountain Day'.

Week 5: Monday 15th to Saturday 20th - Fantasia Finale

For our final themed week we turn into sorcerers, wizards and magicians working with tools of the trade like wands, orbs, crystals and magic dust. From the corridors of ancient castles to hallways of old schools, there are so many spells to be woven and magic to be made!

Highlight: Friday 19th, end of theme party.

Content



Across our five themed weeks we have a main week's concept plus daily focus on key areas. At the end of Summer School we also have two extension weeks that run to a balanced daily schedule of creative arts, phonics, maths, PE and music.

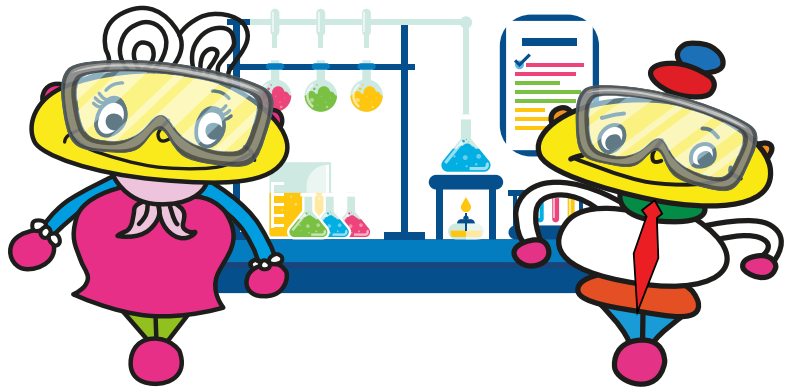
Magic Science Mondays

Even the youngest children can enjoy explorative, hands-on, science based fun at Kspace! Mondays are for mini and midi-scientists, and our teachers take the children through some projects that will enhance their knowledge and make them even more curious about the world around them! Kids love to explore and inquire - they like things that bubble, fizz, whizz and pop! Magic Science Mondays cover a wide range of subjects.

Dates: July 18th, 25th. August 1st, 8th & 15th.

Highlight: July 18th Marine Day (Umi no Hi).

Note: Closed Mon August 22nd.



Music, Drama & Phonics Tuesdays

Role-play is very popular with children and dramatic play has been proven to be a great way to learn! All four age groups have a special age-appropriate theme and content on 'Music & Drama Tuesdays' that ranges from world music, percussion time, teaching/interacting with puppets, make believe play, situation role-play, acting in pairs, small skits and even learning mini-dances! We make each class come to life with a lovely range of props, costumes, backdrops, toys and materials to create a memorable and rewarding experiences.

Dates: July 19th, 26th. August 2nd, 9th & 16th

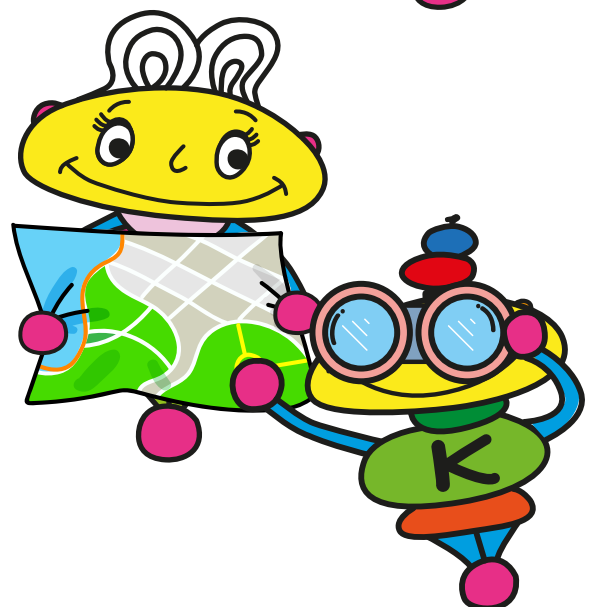
Note: Closed August 23rd



Geography & Exploration Wednesdays

Across the weeks we learn about some great geographical facts. On our journeys we discover myths, magic, folklore and some scintillating facts that are as fun as fantasy!

Dates: July 20th, 27th. August 3rd, 10th & 17th



Art & Design Thursdays

Kspace is famous for its variety of creative arts and in summer we have some spectacular projects for the kids!

We cover everything from large-scale mural art to individual pieces. Children love having the freedom to use materials generously, and the extraordinary variety of mediums we use goes beyond what they are normally exposed to. Projects are sensory based and fabulous fun with discovery of something magical every week!

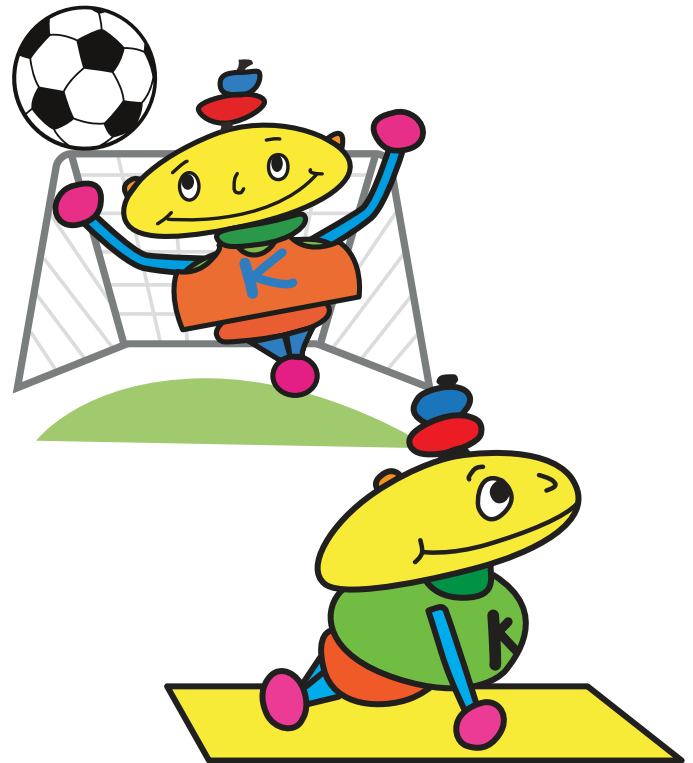
Dates: July 21st, 28th. August 4th, 11th & 18th



Sports & Games Fridays

Children of all ages love to let off steam, particularly in summer! Fitness Fridays offer a funky range of sports, obstacle courses, team games, challenges, and physical fun that the kids won't be able to get enough of! Kspace has a beautifully equipped soft-gym, soft-floor rooftop with a custom-designed sun lawning and water-play equipment, plus a huge range of fantastic tools to build fantasy worlds for funky fitness!

Dates: July 22nd, 29th. August 5th, 12th & 19th



Saturday School

The fun doesn't stop on Saturdays! Kspace is open every Saturday, and we can combine Saturday School with your regular Summer School plan, or attend them alone.

For EFL/English Language Learners

ESL students are also given support in the regular Summer School period and our teachers are ESL specialists. We work through activities, games, worksheets, language quizzes, role-play and reiteration that are aimed at teaching/improving language. We also recommend adding ESL/EFL After School classes, tutorials and Saturday School for extra study.

Please also ask us about our Summer Extension until that offers an extra opportunity to boost language skills. This runs when our regular Summer School finishes, from August 24th to September 2nd.



SUMMER SCHOOL TIMETABLE



Children attending Summer School until August 20th enjoy a cross range of themed activities, as below. In Summer School Extension (ages 14 months to 9 years) from August 24th onwards children enjoy a schedule more in line with term-time, with a balance of music, arts and crafts, academic learning and age appropriate fun activities.

	Gremlins (14 months to 3 years)	Mermaids (3 to 4 years)	Unicorns (4 to 6 years)	Dragons (6 to 8 years)	Thunderbirds (8 to 9 years)
8:00 - 9:00	Optional Breakfast Club				
9.00 am	Regular Drop Off*				
	*Drop-off and collection times are staggered. Parents will be informed.				
9:00 - 9:15					Registration & Morning Meeting
9:15 - 9:30					
9:30 - 9:45	Themed Circle Time	Themed Circle Time	Morning Meeting & Themed Circle Time	Morning Meeting & Themed Circle Time	Themed Activity 1
9:45 - 10:00					
10:00 - 10:15	Story Time plus Snack/Toilet Time	Story Time plus Snack/Toilet Time	Focus Period (Maths/Phonics) & Snack 1 plus Toilet Time	Focus Period (Maths/Phonics) & Snack 1 plus Toilet Time	Snack/Toilet Break
10:15 - 10:30					
10:30 - 10:45	Themed Activity 1				
10:45 - 11:00		Themed Activity 1	Themed Activity 1	Themed Activity 1	Themed Activity 2
11:00 - 11:15	Gym Play				
11:15 - 11:30	Themed Activity 2				
11:30 - 11:45		Gym Play			
11:45 - 12:00	Lunch		Physical Activity Period <small>(on Fitness Fridays this period may be swapped for another subject)</small>	Physical Activity Period <small>(on Fitness Fridays this period may be swapped for another subject)</small>	Themed Activity 3
12:00 - 12:15		Themed Activity 2			
12:15 - 12:30	Puppets/Story Time/ Nappies/Toilet		Lunch & Toilet Time	Lunch & Toilet Time	Lunch & Rest
12:30 - 12:45					
12:45 - 1:00	Cocoon Club <small>(nap or rest time – some children like to snooze, others like to enjoy quiet table activities, puzzles or play with a teacher)</small>	Lunch & Toilet Time			
1:00 - 1:15					Physical Education
1:15 - 1:30			Themed Activity 2	Themed Activity 2	
1:30 - 1:45	Gym Time/ Music Time	Themed Activity 3			Well Being/Yoga/Relaxation
1:45 - 2:00					
2:00 - 2:15			Final songs/ stories/games	Final songs/ stories/games	
2:15 - 2:30	Activity 3	Music & Percussion Time (or alternative activity)			Themed Activity 4
2:30 - 2:45			Daily Reiteration, tidy-up and wind down.	Daily Reiteration, tidy-up and wind down.	
2:45 - 3:00	Wind Down & Pack Up	Wind Down & Pack Up	Wind Down & Pack Up	Wind Down & Pack Up	Review of the Day
Regular Collection Time is at 3:00 pm					
3:00 - 4:00	After-School Classes				After-School Classes
4:00 - 5:00	After-School Classes				After-School Classes
5:00 - 6:00	Extension Hrs available in units of 1 hr, starting and finishing on the hour @ 2,000yen. No part charges.				After-School Classes or Extension Hr
6:00 - 7:00					Extension Hrs

Fees



Entrance Fees

Kspace Enrolled Members

No Registration Fee

Materials Fee ¥6,000 per child

Visitors

Summer School Registration Fee ¥10,000 per child

Materials Fee ¥6,000 per child

Alternatively, children who are eligible for attendance at Kspace programmes mid-term time, or intend to return for future Spring, Summer & Winter School periods, can join as below to benefit on future registration fee savings. Please ask us if your child's age group applies.

Kspace Main Membership Fee ¥20,000

Covers entry to After-School, Private Tutorials and Seasonal Programmes (plus Parent & Child classes and student-eligible community events when these additions are relaunched)

Saturday School Membership Fee ¥40,000 per child + ¥10,000 pro-rated Annual Fee

Covers entry to the Saturday School Programme, Seasonal Programmes, Saturday After School, Private Tuition and student-eligible community events (when scheduled). v

Daily Attendance Fee

Midweek	Time	Single Day
14 mths to 9 years	9:00 am to 3:00 pm	¥13,000
	All-day option 9:00 am to 5:00 pm	¥16,000

Note: Saturday enrolled members can use their prepaid Saturday ticket blocks during Saturdays in Summer School. These tickets and the service hours they cover will remain the same as the rest of the year.

AFTER SCHOOL FEES

¥3,000 per class for 1 hour sessions or ¥25,000 per block of 10 x 1hr classes

PRIVATE TUITION FEES

Academic & Extra Curricular Subjects

¥7,000 per class (1 hour class fee - 90mins & 2hrs also available)

One-to-one lessons offered in Maths, Reading, Writing, Phonics, English Language, Science, and homework support.

Music Classes

*¥5,000 to ¥10,000 per class (30 min or 1hr classes)

One-to-one tuition in a variety of music instruments and voice coaching. Please enquire.

*Subject to tutor availability & schedule. *Tutors may have fixed minimum session periods. Please enquire.*

EXTENSION HOURS

Breakfast Club

8:00 am to 9:00 am, ¥2,000

Afternoon Extension

5:00 pm to 6:00 pm, ¥2,000

6:00 pm to 7:00 pm, ¥2,000

Note: No part-time charges.



Extra Costs

Uniform

Regular T-shirt ¥2,800
Allergy Safety-Aware T-shirt ¥3,000
Striped Shorts ¥6,000
Striped Dress ¥8,000

Note: Uniform items are mandatory and must please be worn to each lesson.

Children attending regularly will need more than one set of uniform.

Prices listed throughout the brochure are exclusive of Japanese Consumption Tax, to be added @10%

Meals

Kiwi Kitchen's catering service (Monday to Friday)

Regular size meal: morning snack + lunch set @¥850

Large size meal: morning snack + lunch set @¥950

Afternoon snack: @¥300

Note:

- A later snack/meal can be ordered for children who extend their time with us.
- Kiwi Kitchen prices listed are inclusive of Japanese Consumption Tax @10%.
- Kiwi Kitchen's meals must be ordered in advance, by the Thursday before attendance. If the deadline is missed please send in meals from home prepared according to our policy.

Saturday School Kspace Catering

Morning snack & lunch @¥850

Afternoon Snack @¥300

Note: Prices listed are inclusive of Japanese Consumption Tax @10%

Fee & Attendance Notes

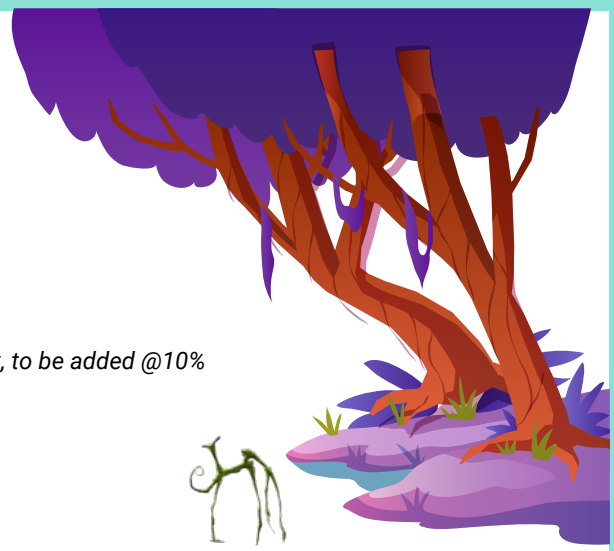
These are abbreviated policy points. Full details of service, rules and policies (including the current mid-pandemic health and travel policy) are included in the authorisations forms/starter pack. We must receive a signed and agreed copy of the authorisations forms from you before your child may attend Summer School.

Refunds & Make-ups

- No refunds are offered, unless the school is mandated (or chooses) to close due to the pandemic and withdraws all services for the full summer school period.
- In the case of any closure we will work with families to provide alternative dates or options first. If parents opt not to attend during an open period at the school, dates they give up might not be refunded.
- Summer School fees only apply to the Summer School 2022 period. Fees/credit/days cannot be carried over if unused, in full or in part.
- Make-up days may be offered (within the Summer School period) if 2 days notice of absence is given in writing (only). Approval of make-up days is based upon space availability and is at the discretion of the school.
- Refunds/credits/lieu services are not offered if you mistake or miss attendance dates and for sick days. The School does not automatically send out attendance reminders to you so please kindly keep track of your booked dates, or contact our office.

Attendance Notes

- The Registration or Membership Fee (for new children) and Materials Fee (for all attendees) is charged regardless of how many days booked (from 1+) and is mandatory.
- Booking is made for specific dates in advance of attendance.
- Fees must be received prior to provision of services.
- The dates of attendance and fees are paid for a specific named child.
- If your child is younger than 3 years old and/or hasn't been placed in a child-only programme before, please contact us for our advice on the best attendance pattern.





	Summer/Autumn T-Shirt	Summer Only April 5th to October 30th
Gremlins	<p>Yellow T-shirt</p> 	<p>Striped Shorts (Yellow)</p> 
Gremlins	<p>Orange T-shirt</p> 	<p>Striped Shorts (Orange)</p> 
Mermaids	<p>Pink T-Shirt</p> 	<p>Striped Shorts or Dress (Pink)</p> 
Mermaids	<p>Red T-shirt</p> 	<p>Striped Shorts or Dress (Red)</p> 
Unicorns	<p>Green T-shirt</p> 	<p>Striped Short or Dress (Green)</p> 
Dragons Thunderbirds	<p>Purple T-shirt</p> 	<p>Striped Shorts or Dress (Purple)</p> 

PRICES

Regular T-shirt **¥2,800**

Allergy Safety-Aware T-shirt **¥3,000**

Striped Shorts **¥6,000**

Striped Shorts **¥8,000**

Note: Uniform items are mandatory and must please be worn to each lesson.
Prices listed are exclusive of Japanese Consumption Tax, to be added @10%

SIZES

100

110

120

130

140

150

► **Online Order Form**

★ Summer Uniform



Examples (Not for sale at Kspace)



Uniform Indoor Shoes

- Only plimsolls/上履き are permitted inside the school.
PLEASE DO NOT PROVIDE ANY OTHER STYLE OF INDOOR FOOTWEAR.
- White or Black



Health Protocol

All children aged 4yrs + must wear a well-fitting, clean mask over nose/mouth at all times please.

Summer After School

We run amazing After School extracurricular classes in summer: You can add After School classes to your summer school regular day or if you book our 'All Day' option (until 5.00pm) your child will automatically attend After School classes from the selection below. Extension hours between 5:00pm and 7:00pm are also available.

PRIVATE TUTION

1 - 1 tutoring is available in a range of academic subjects, some languages, music (piano, ukulele, guitar and drums) and also vocal coaching. New students begin with an assessment class.

After School Timetable

Summer School Part 1

(July 18th to August 20th, 2022)

The schedule is below but may be subject to change
We are closed on August 22nd and 23rd.

Summer School Part 2

(August 24th to September 2nd, 2022)

The after school timetable for August 24th onwards is released separately.

	Monday	Tuesday	Wednesday	Thursday	Friday	Saturday
Gremlins (14 months to 3 years)	3:00pm Cooking 4:00pm Number Rhymes	3:00pm Art 4:00pm Cooking	3:00pm Drumming 3:00pm Baby Ballet 4:00pm Crazy Dough	3:00pm Science 4:00pm Ball Games	3:00pm Pre-Phonics 4:00pm Painting Club	2:00pm Pre-Phonics 3:00pm Art 4:00pm English Language
Mermaids (3 to 4 years)	3:00pm Broadway Dance 3:00pm Phonics 4:00pm Art	3:00pm Science 4:00pm Painting	3:00pm Phonics 4:00pm Football 4:00pm English Language	3:00pm Hip Hop 3:00pm Maths 4:00pm Young Engineers	3:00pm Cooking 4:00pm Ukulele Club	2:00pm Hip Hop 2:00pm Football 3:00pm Art 4:00pm English Language
Unicorns (4 to 6 years)	3:00pm Broadway Dance 3:00pm Maths 4:00pm Sculpture	3:00pm Cooking 3:00pm Interview Practice* 4:00pm Science *Please ask about your child's eligibility and suitability for this class	3:00pm Art 3:00pm English Language 4:00pm Robot Club	3:00pm Young Engineers 4:00pm Hip Hop 4:00pm Singapore Maths	3:00pm Football 3:00pm Art 4:00pm Ninja Club	2:00pm Phonics 2:00pm Hip Hop 3:00pm Singapore Maths 4:00pm English Language
Dragons (6 to 8 years)	3:00pm Cooking 4:00pm Sculpture 4:00pm Broadway Acting, Voice & Dance	3:00pm Science 4:00pm Cooking	3:00pm Young Engineers 4:00pm Art 5:00pm Fitness Club	3:00pm Painting 3:00pm Boxing 4:00pm Kapla 4:00pm Hip Hop	3:00pm Robot Club 3:00pm Sewing 4:00pm Science 4:00pm Ukulele Club	3:00pm ESL 4:00pm Phonics 5:00pm Creative Art
Thunderbirds (8 to 9 years)	3:00pm Cooking 4:00pm Sculpture 5:00pm Broadway Acting, Voice & Dance	3:00pm Science 4:00pm Cooking	3:00pm Young Engineers 4:00pm Art 5:00pm Fitness Club	3:00pm Painting 3:00pm Boxing 4:00pm Kapla 4:00pm Hip Hop	3:00pm Robot Club 3:00pm Sewing 4:00pm Science 4:00pm Ukulele Club	3:00pm ESL 4:00pm Phonics 5:00pm Creative Art

Notes:

1) Age groups are decided by DOB and ability.

2) Extracurricular classes are designed to add range and diversity of content for our summer students and teachers have artistic freedom and flexibility. Some details may change.

Communication



Summer School families have access to a fantastic password-controlled Members' website called 'Kokomo Club' that includes:

- ★ Videos
- ★ Theme updates
- ★ Newsletters

We invite parents to stay updated and like/follow/check-in and comment on our social media accounts.

 [@kospaceinternationalschool](https://www.facebook.com/kospaceinternationalschool)

 [@kospaceinternational](https://www.instagram.com/kospaceinternational)



Please get to know our school mascots! Kokomo and Kokomama are part of the Koko family, very important aliens who love to join us occasionally for events calendar highlights, and even makes an appearance in class sometimes!

You will see these cheeky, caring little characters in our brochures, and the children proudly wear Kokomo on their uniform T-shirts.

Please get to know our school mascots on their profile page [Click here!](#)



Saturday School

The fun doesn't stop on Saturdays!

Please check out our amazing Saturday programme [here](#). This runs almost all year round and students who opt for Saturday Membership can also attend any dates outside the summer camp period.

Orientation Information

All details to prepare you well in advance for Summer School such as meal booking and packed lunch guidelines, uniform/T-shirt ordering details, things to bring, emergency contact information and website access passwords are sent a few weeks before the programme starts. The Summer Starter Pack is automatically forwarded to enrolled parents. Feel free to ask us any questions that you may have in the meantime.

