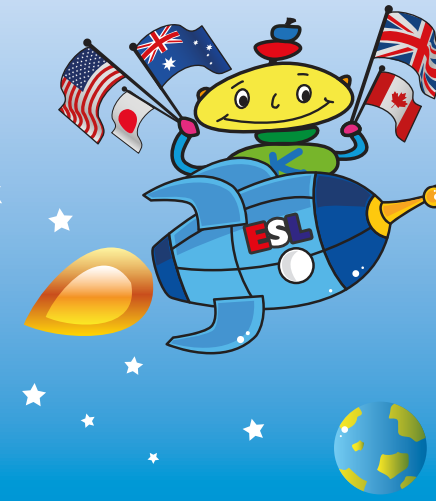


Kspace SATURDAY SCHOOL



www.kspacetokyo.org

5-13-39 Shirokanedai, Minato-ku, Tokyo 108-0071 TEL 03-5421-4186 enquiries@kspacetokyo.org

Kspace Saturday School is a child-only programme. At Kspace we have small classes and a high teacher:student ratio, plus a lively and happy atmosphere that makes all children feel instantly welcomed. We offer excellent community feedback so that you can keep track of what is happening in your child's age group and feel part of our family!

Our teachers are all ESL specialists who work in our main International School and have schooled hundreds of happy students to achieve EXCELLENT RESULTS! Any parent who wishes to turn their child's Saturdays into pure quality time should enroll in this programme!

OUR STUDENTS

We welcome all children from 14 months to 8 years who want to learn to communicate in English. Children of many language and cultural backgrounds attend our sessions. We highly recommend this programme for EFL/ESL students, returnees, and for any child who wants to learn, improve, or advance their English studies. Children also join us from other international schools so that they can enjoy the special 'Kspace' experience!

OUR AGE GROUPS

We offer four age groups. Each age group is designed to accept children whose English language level ranges from beginner to advanced. The groups all have a different curriculum, themes and materials, so that your child always has somewhere to progress to, and many levels of challenge.



Please see specific age/groups handouts for more info.

Also - see our Saturday/Midweek ESL Elementary Programme (6yrs -10yrs, after school hours)!

OUR METHOD

- ★ Easy-to-understand lessons
- ★ Music/drama based programmes
- ★ Unforgettable theme based curriculum
- ★ Fun activities: gym play, songs, art & craft, puppet shows, early phonics and maths
- ★ Upbeat, lively atmosphere
- ★ Live music performed by real musicians
- ★ Warm and friendly students, teachers and community
- ★ No pressure, non-competitive, supportive environment
- ★ Teachers are English language natives/English teaching experts
- ★ Learn a range of British, American, Canadian, Australian, clear accents
- ★ Fun international festivals and traditions celebrated together

OUR TEAM

Our team is made up of amazingly skilled, charismatic teachers. Each teacher has a lot of experience teaching a variety of age groups and has a broad range of talents. Our team is musically and creatively gifted and expert at assessing students' needs. Teachers are chosen from Kspace International School, are native/fluent English speakers and have lots of experience in Japan/with EFL learners.

OUR COMMUNITY

Saturday School Membership entitles a family to attend Parent & Child programmes too, and children get free membership to Seasonal Programmes and our After School as well invites to shows/assemblies, picnics and calendar highlights.

HOW OFTEN SHOULD MY CHILD ATTEND?

Your child can attend as often as you wish. With weekly attendance, we see children go from complete beginners to confident kids, who love to speak English and can interact well with international friends. We advise regular attendance and advance booking.

HOURS

★ 9.00am to 2.00pm Regular Saturday School Programme

EXTRA HOURS

★ 8.00am to 9.00am Breakfast Club

★ 2.15pm to 5.15pm – After School Programmes, 1 hr each

★ 5.00pm to 7.00pm – Extension Hours, charged per hr.

AFTER SCHOOL PROGRAMMES

2.15pm to 5.15pm, 1 hour for each subject/lesson

After School programmes are available in a wide variety of extracurricular subjects that support and expand our teaching. Children enjoy a short break after their regular daily programme and then go into their chosen classes, or they can attend After School only. We also run an ESL Elementary Programme for ages 6 to 10 years from 3.00pm to 6.00pm. Please ask for more information about Saturday After-School Classes or visit www.kspacetokyo.org for full details.

PRIVATE TUTORIALS

Ages 3 years to 11 years - 9.00am to 6.00pm
Private 1-1 tutorials with our specialists are available in basic to advanced level Phonics or Mathematics, ESL, Science as well as private musical instrument lesson options, including cello, piano, and guitar.

MEALS

You can order meals and snacks from Kspace or bring in your own snacks and packed lunch. We have a strict food policy for food brought into the school and parents will be advised of details when they join.

MEDIA & COMMUNICATION

Each enrolled Saturday School family is allowed access to our VIP Members' Site where we publish:

- ★ Photos of each class
- ★ Colourful weekly newsletters
- ★ Weekly Mini-Videos
- ★ Class updates & letters
- ★ Theme sheets

School merchandise & DVDS to support learning at home are available for purchase.

EVENTS

Saturday School parents are a vital part of our community and within your membership you will also enjoy special calendar highlights and services, and great chances to mingle and make friends with the parents and children from our International Preschool and Kindergarten:

- ★ Access to Kspace talent and music shows
- ★ All-school family picnics
- ★ Charity Fundraisers
- ★ Parent and community meetings

UNIFORM

Our students wear Kspace Kokomo T-shirts which are the same as pupils enrolled in our International School. These are available in a range of sizes: Shining Stars: Orange & Yellow* Shooting Stars: Pink & Red* Sparkling Stars: Green* Super Stars: Purple*

WHEN IS ENROLLMENT?

Children can begin our courses at any time. We are open almost every Saturday of the year! Just contact us for more details.

