

# Super Stars

6 to 9 years

In the Super Stars programme we teach English through a combination of academic exercises and activities, with the unique addition of exciting drama/role-play scenarios and hands-on practice. Every month children learn a great new theme. The classroom comes alive with new costumes, props and materials. We recreate a mini-world where we teach life skills and useful phrases. The Super Star Guides (our teachers) dress up and become different characters that introduce the children to wonderful new things... all presented in English.

## Language Level

All progress levels accepted – beginner to advanced!

## COURSE CONTENT

- Itinerary is like a mini-kindergarten, with great balance of mental, physical and creative stimulation!
- Easy, memorable and useful English
- Costumes, props and English language role-play
- New and exciting themes every month including: The Restaurant, The Doctor's Surgery, The Airport, The Supermarket and many more!
- We perform, explain, repeat and guide. Each stage is made easy!
- We offer unique, fun and creative activities, that children remember and can put into daily practice.

## SUPER STARS' DAILY ITINERARY INCLUDES:

- Circle Time • Theme Discussion • Theme Songs
- ESL Vocabulary, Literacy & Maths (counting/calendar/days of the week)
- Theme Activity • Role-Play & Drama • Snack & Lunch/Dinner
- RWI Phonics • Theme-Based Creative Activity: Craft, Art, Cookery
- Gym/Room/Outdoors

## MATERIALS/TOOLS



ESL games-flash cards/bingo games movement to words/memory games-chains/matching activities/Jolly Phonics / Kspace role play script/dialogue is simple enough to work for all levels of English. Craft & story/gym play etc are linked through to the theme.

## Super Star Themes

- August:** Me & My Family
- September:** The Theatre & Cinema
- November:** The Bank & The Post Office
- December:** Me & My Family
- January:** The Ski Resort & Winter Sports
- February:** Dinosaurs (Plus 'The Zoo' & Endangered Species)
- March:** Explorers & Space!
- April:** The City & The Country
- May:** The Police Office, Fire Station & Traffic Control
- June:** The Holiday (including The Hotel/Surf & Dive Shop)
- July:** Robotics Workshops!
- August:** Summer School

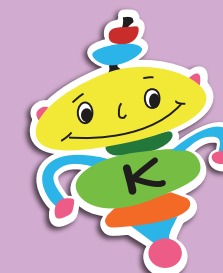
Schedule may change according to children's study needs.

## Learning through role-play



## EXAMPLE OF THEME-BASED ACTIVITIES:

- Study of health food versus junk food sorting game
- Doctor Check-up Activity
- Reading and Eye Chart
- Doctor Kit memory game
- Wrapping arms/legs in bandages
- Pretend X-Ray machine
- Sterilising equipment
- and making work area clean





## Example Itinerary

Super Stars Daily Schedule Includes:

### Drop off:

**Morning Programme: by 9.00am (or Breakfast Club from 8.00am to 9.00am)**

**Afternoon Programme: by 1.00pm**

### Circle time & Morning Meeting (mixed language ability)

- Theme Discussion
- Theme Songs
- ESL & Maths (counting/calendar/days of the week)
- Theme Activity (Show-Repeat-Use: Role Plays)
- Snack
- Jolly Phonics
- Craft/Art
- Gym
- Lunch
- Repeat Role-Play/Drama
- Collection at 2.00pm

Children who stay on for a longer day have a break and snack at 2.00pm and start their afternoon schedule at 2.15pm.  
After School classes start at 2.15pm and run until 5.00pm.  
Extension Hours run from 5.00pm and 6.00pm, and 6.00pm to 7.00pm if requested.  
Final collection time is 7.00pm, prompt.

### Super Stars Uniform

All Kspace children wear a Class Coloured T-shirt with our mascot Kokomo on it. Super Stars wear purple.  
Children must wear plimsolls/uwabaki inside the school.



### Saturday School Meals

Children can order a special snack & meal set that is catered for them by Kspace, or you may send in a packed meal. Kspace operates a strict no nuts/allergens policy



# Super Stars

6 to 9 years

