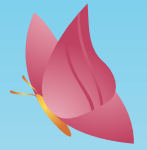


International Preschool & Kindergarten
Kspace



Spring Fun Boot Camp 2018



March 19th to April 14th 2018
Ages 14 months – 8 years



Regular Programme
9.00 to 3.00pm

Afterschool
3.00pm to 5.00pm

Extension hours
5.00pm to 7.00pm

Private Tuition



phone: 03-3446-3478/03-5421-4186 email: enquiries@kspacetokyo.org
www.kspacetokyo.org

About Spring Fun 'Boot Camp'

Enrolling your child in our special spring boot-camp is a great way to keep them happy and active during regular school holidays. This year we have four wonderful weeks for your children and many wonderful activities to look forward to.

This seasonal camp is perfect for children from all backgrounds and all levels of English language abilities from beginners to advanced. The main purpose is to make new friends and enjoy the special Kspace atmosphere!

For EFL learners it can help them improve their English and build confidence. They enjoy being in our international classes with our talented teachers, and they benefit from learning in our lively and exciting environment.

The students will enjoy a combination of fun activities and projects including Art, Cooking, Phonics, Role-play, Sports and Maths. When the weather is great we will also spend periods having fun on our roof and outdoors in the park.

Extra Highlights

Wednesday 21st of March

National Holiday. Kspace is open even on holiday days.

Monday 26th of March

The children will enjoy a trip outdoors to the Nature Park/surrounding green areas today.

Monday April 2nd

Easter Highlight. Easter egg and treasure hunts.

Saturday School

Saturday School runs throughout the spring break. Learn more about Saturday School on the link below, or ask us if you would like to receive the Saturday calendar for your child's age group:

<http://www.kspacetokyo.org/main/saturday/>



Dates and Attendance

Spring Break runs from March 19th to April 14th

Open Monday to Saturday

Closed on April Monday 9th and Tuesday 10th

Children can attend any amount of days.

Note: If you have a toddler/preschooler aged 14 months to 2 years old that is joining us for the first time please contact us to find out our recommended attendance pattern for your child.

Times

Regular Programme

The regular daily programme for all age groups is 9.00am to 3.00pm

After-School

After School classes run after the Spring School, from 3.00pm to 5.00pm.
The After-School schedule and range of subjects is found below in this brochure.

Private 1-1 Tuition

Ages 3 to 13 years

We offer private tuition in a range of subjects including ESL, literacy/reading/writing skills, Mathematics, Japanese and musical instruments, piano, violin, drums and guitar.

Extension Hours

8.00AM until 9.00AM

Your child can attend 'Breakfast Club' from 8.00am. If you would like them to eat before their classes start, please supply their breakfast and toothbrush set.

All food must abide by our Food Policy which is supplied in our Spring School Starter Pack.

5.00PM - 6.00PM & 6.00PM to 7.00PM

Afternoon Extensions are booked/paid in units of 1hr



Membership Fees

Kspace Members - No extra membership fees required

Non-Members must choose from our two Kspace Membership options:

a) **Kspace Main Membership @ 20,000yen**

Covers entry to Parent & Child classes (including Saturday Family Circle), After-School (plus Saturday After-School), Private Tutorials, Seasonal Programmes and community events.

b) **Kspace Saturday Membership @ 30,000yen**

Covers entry to the Saturday School Programme, Saturday Family Circle, Seasonal Programmes and community events.

Fees

Regular midweek programme (9:00am - 3:00pm)	¥13,000 per day
After School (3.00pm - 5.00pm)	¥3,000 per class or 25,000 for a block of 10 classes <i>Note: Guest teacher or specialist classes are charged @ ¥4,000 per class (e.g. Dance & Karate)</i>
Breakfast Club (8.00am - 9.00am)	¥1,000/per hour
Extension Hrs (5.00pm - 7.00pm)	¥2,000/per hour
Private Tuition (30mins Music or 1 hr Academic)	Music @ ¥5,000 or Academic @ ¥7,000
Saturday School Fee (9.00am to 2.00pm)	¥11,250 per class or block of 4 @ ¥40,000

Other Fees

Uniform

All attendees must wear a Kspace School T-shirt or sweatshirt at all times, and have one in their spare clothing bag. It is a requirement of school acceptance that all children with allergies or special diets wear an 'allergy aware' T-shirt/sweatshirt.

Regular T-shirts @ ¥2,000 each

Regular sweatshirts @ ¥3,000 yen each

Allergy aware T-shirts @ ¥3,000 each

Allergy aware T-shirts @ ¥4,000 yen each

Note: Specific colours must be purchased per age range.

See the range here: www.kspacetokyo.org/main/download/saturday/saturday-uniform-form.pdf

*Meals

Catered meals are mandatory for all age groups and cost @¥720 per attendance day (includes *early morning snack and lunch). Meals are ordered online directly to our caterer Kiwi Kitchens. You can order meals online by creating an account and following instructions here; <https://edu.kiwikitchen.com/>

NOTE Please pack one afternoon snack and abide by our food policy, which will be passed to you in your Spring Boot Camp Starter Pack.*

Payment & Refunds

All fees and membership must be paid in advance of attendance. Payment secures your child's place.

Strictly no refunds, carry-overs or any services are offered in lieu. Bookings and payments for Spring Break apply to Spring Break only and fees/credit cannot be carried over if unused, in full or in part, without exception.

Make-up days: Due to planning we cannot unfortunately offer any make-up days at all during this period.

Trial Periods: There are no unpaid trial periods within the Spring School dates.



After School Programmes

Ages 2 to 10 years

Spring Boot Camp After School class selection is chosen from:
Midweek 3.00pm to 5.00pm classes below
Saturday 2.00pm to 5.00pm classes below
 Private 1-1 tuition also available, please enquire for times and details.

14 months to 3 years (Caterpillar/Chrysalis)

MONDAY	TUESDAY	WEDNESDAY	THURSDAY	FRIDAY	SATURDAY
2:00~3:00 ART 3:00~4:00 TODDLER FOOTBALL 4:00~5:00 ASPACE CLUB	2:00~3:00 COOKING 3:00~4:00 ART 4:00~5:00 ASPACE CLUB	2:00~3:00 DRUMMING 3:00~4:00 NUMBER RHYMES 4:00~5:00 ASPACE CLUB	1:45~2:30 BABY BALLET 2:00~3:00 COOKING 3:00~4:00 BALL SPORTS 4:00~5:00 ASPACE CLUB	2:00~3:00 MESSY PLAY 2:00~3:00 PRE-PHONICS 3:00~4:00 CRAZY DOUGH 4:00~5:00 ASPACE CLUB	9:00~2:00 SATURDAY SCHOOL 2:00~3:00 PRE-PHONICS 3:00~4:00 ART 4:00~5:00 DRUMMING

3 to 4 years (Butterfly/JLIP)

MONDAY	TUESDAY	WEDNESDAY	THURSDAY	FRIDAY	SATURDAY
2:00~3:00 MAGIC CLUB 2:00~3:00 PHONICS 3:00~4:00 ART 4:00~5:00 FRENCH 4:00~5:00 KAPLA CLUB	2:00~3:00 FOOTBALL 2:00~3:00 SINGAPORE MATHS 3:00~4:00 COOKING 3:00~4:00 ENGLISH LANGUAGE 4:00~5:00 SCULPTURE	2:00~3:00 BALLET 2:00~3:00 FOOTBALL 3:00~4:00 BROADWAY KIDS DANCE 3:00~4:00 PHONICS 4:00~5:00 SCIENCE 4:00~5:00 ENGLISH LANGUAGE 12:00~5:00 BUTTERFLY SPECIALS ENGLISH LANGUAGE COURSE	2:00~3:00 HIP HOP DANCE 2:00~3:00 NICK'S WORLD MUSIC 3:00~4:00 ANIMAL CARE 3:00~4:00 PHONICS 4:00~5:00 MESSY PLAY 4:00~5:00 PHONICS	2:00~3:00 COOKING 2:00~3:00 BROADWAY KIDS DANCE 3:00~4:00 ENGLISH LANGUAGE 3:00~4:00 KAPLA CLUB 4:00~5:00 PHONICS 4:00~5:00 MESSY PLAY	9:00~2:00 SATURDAY SCHOOL 2:00~3:00 HIP HOP 2:00~3:00 FOOTBALL 3:00~4:00 ART 4:00~5:00 ENGLISH LANGUAGE

4 to 6 years (Bugs)

MONDAY	TUESDAY	WEDNESDAY	THURSDAY	FRIDAY	SATURDAY
3:00~4:00 KARATE 3:00~4:00 SPEAK OUT LOUD 4:00~5:00 SEWING CLUB 4:00~5:00 FRENCH 4:00~5:00 MAGIC CLUB	3:00~4:00 JAPANESE 3:00~4:00 PHONICS 3:00~4:00 KAPLA CLUB 4:00~5:00 BEE-BOT CLUB 4:00~5:00 ENGLISH LANGUAGE 4:00~5:00 SINGAPORE MATHS	3:00~4:00 ADAM'S ART 3:00~4:00 BALLET 4:00~5:00 PHONICS 4:00~5:00 ADAM'S ART 4:00~5:00 ENGLISH LANGUAGE 4:00~5:00 BROADWAY KIDS DANCE 4:00~5:00 KAPLA CLUB 12:00~5:00 BUGS SPECIALS ENGLISH LANGUAGE COURSE	3:00~4:00 HIP HOP DANCE 3:00~4:00 COOKING 3:00~4:00 JAPANESE 4:00~5:00 CHESS 4:00~5:00 SCIENCE	3:00~4:00 SINGAPORE MATH 3:00~4:00 BEE-BOT CLUB 3:00~4:00 IPAD CLUB 4:00~5:00 BROADWAY KIDS DANCE 4:00~5:00 PHONICS	9:00~2:00 SATURDAY SCHOOL 2:00~3:00 PHONICS 2:00~3:00 HIP HOP 3:00~4:00 SINGAPORE MATHS 4:00~5:00 ENGLISH LANGUAGE

6 to 10 years (Elementary)

MONDAY	TUESDAY	WEDNESDAY	THURSDAY	FRIDAY	SATURDAY
		4:00~7:00 ELEMENTARY COURSE 4:00~5:00 ART 5:00~6:00 ENGLISH LANGUAGE 5:00~6:00 BROADWAY KIDS DANCE 6:00~7:00 PHONICS & HOMEWORK CLUB	5:00~6:00 HIP HOP DANCE 6:00~7:00 (Starts Feb 2018) TAP DANCE (Beginners)	4:00~7:00 ELEMENTARY COURSE 4:00~5:00 ADAM'S ART 5:00~6:00 ENGLISH LANGUAGE 5:00~6:00 BROADWAY KIDS DANCE 6:00~7:00 PHONICS & HOMEWORK CLUB 7:00~8:00 TAP DANCE (Intermediate)	3:00~6:00 ELEMENTARY COURSE 3:00~4:00 ESL 4:00~5:00 PHONICS & HOMEWORK CLUB 5:00~6:00 CREATIVE ART

Spring Fun Boot camp - Enrollment Form 2018 (Page 1)

We look forward to receiving your booking for Spring School! The easiest way to apply for a place is to book on this link online: <http://www.kspacetokyo.org/main/about/spring-camp-online-booking-form.php>

Or please fill out all details on the 2 pages below.

Places will only be confirmed when payment is received.

As well as the authorisations below you may be required to read/sign additional forms. These will be sent separately.

Child's Name (first/family name)		Date of Birth (DD/MM/YYYY)	
Parents' Names		Contact Email	
Emergency Contact Number		Mobile Phone	

Consent & Indemnity Forms

Please tick both boxes below if you are in agreement. If you do not wish to tick the boxes please contact the Kspace office to discuss your application.

I am happy for photographs/films of my son/daughter to be used in relation to school related work & posts, in school publicity/publications, related SNS or occasionally by outside agencies such as for Charity Events.

I give permission for my child to be photographed inside and out of the school. I understand that it is part of the Kspace parent-feedback process to include my child in publications.

Signed _____

Date _____

Park/Off-Site & Trip Consent

I give consent for my child to be taken off the Kspace premises for roof and park play in their school group, if weather permits.

Signed _____

Date _____

Medical Information

Please provide details of any medical condition your child has, including regular medication needs, e.g. epilepsy / asthma / inhaler, diabetic / insulin / migraines, Epipen etc. Please also provide the name, address and telephone number of Medical Centre / Doctor.

Does your child have any medical condition, physical limitations, behavioural or learning differences?

Allergies (including food)

If so do they take any medication and what is it?

Name, address and telephone number of Medical Centre / Doctor

I give full permission for members of school staff to authorise emergency medical treatment in an emergency for my child and also to administer minor first aid if needed. I also give express permission for members of school staff to assist my child with the use of or administer Epipen if there is reasonable cause to suspect an allergic reactions.

Signed _____

Date _____

Enrollment Form 2018 (Page 2)

March 19th to April 14th 2018

Please tick (✓) the boxes on the dates/courses that you would like your child to attend.
Please complete the fields below in full, checking the dates and class times that you wish to enroll for.

MON		TUE		WED		THU		FRI		SAT	
MARCH 19		MARCH 20		MARCH 21		MARCH 22		MARCH 23		MARCH 24	
Regular Programme	9.00am to 3.00pm	Regular Programme	9.00am to 3.00pm	Regular Programme	9.00am to 3.00pm	Regular Programme	9.00am to 3.00pm	Regular Programme	9.00am to 3.00pm	Regular Programme	9.00am to 3.00pm
After School	3.00pm to 4.00pm	After School	3.00pm to 4.00pm	After School	3.00pm to 4.00pm	After School	3.00pm to 4.00pm	After School	3.00pm to 4.00pm	After School	2.00pm to 3.00pm
	4.00pm to 5.00pm		4.00pm to 5.00pm		4.00pm to 5.00pm		4.00pm to 5.00pm		4.00pm to 5.00pm		3.00pm to 4.00pm
Breakfast Club	8.00am to 9.00am	Breakfast Club	8.00am to 9.00am	Breakfast Club	8.00am to 9.00am	Breakfast Club	8.00am to 9.00am	Breakfast Club	8.00am to 9.00am	Breakfast Club	4.00pm to 5.00pm
Extension Hrs	5.00pm to 6.00pm	Extension Hrs	5.00pm to 6.00pm	Extension Hrs	5.00pm to 6.00pm	Extension Hrs	5.00pm to 6.00pm	Extension Hrs	5.00pm to 6.00pm	Extension Hrs	8.00am to 9.00am
	6.00pm to 7.00pm		6.00pm to 7.00pm		6.00pm to 7.00pm		6.00pm to 7.00pm		6.00pm to 7.00pm		5.00pm to 6.00pm
											6.00pm to 7.00pm
MARCH 26		MARCH 27		MARCH 28		MARCH 29		MARCH 30		MARCH 31	
Regular Programme	9.00am to 3.00pm	Regular Programme	9.00am to 3.00pm	Regular Programme	9.00am to 3.00pm	Regular Programme	9.00am to 3.00pm	Regular Programme	9.00am to 3.00pm	Regular Programme	9.00am to 2.00pm
After School	3.00pm to 4.00pm	After School	3.00pm to 4.00pm	After School	3.00pm to 4.00pm	After School	3.00pm to 4.00pm	After School	3.00pm to 4.00pm	After School	2.00pm to 3.00pm
	4.00pm to 5.00pm		4.00pm to 5.00pm		4.00pm to 5.00pm		4.00pm to 5.00pm		4.00pm to 5.00pm		3.00pm to 4.00pm
Breakfast Club	8.00am to 9.00am	Breakfast Club	8.00am to 9.00am	Breakfast Club	8.00am to 9.00am	Breakfast Club	8.00am to 9.00am	Breakfast Club	8.00am to 9.00am	Breakfast Club	4.00pm to 5.00pm
Extension Hrs	5.00pm to 6.00pm	Extension Hrs	5.00pm to 6.00pm	Extension Hrs	5.00pm to 6.00pm	Extension Hrs	5.00pm to 6.00pm	Extension Hrs	5.00pm to 6.00pm	Extension Hrs	8.00am to 9.00am
	6.00pm to 7.00pm		6.00pm to 7.00pm		6.00pm to 7.00pm		6.00pm to 7.00pm		6.00pm to 7.00pm		5.00pm to 6.00pm
											6.00pm to 7.00pm
APRIL 2		APRIL 3		APRIL 4		APRIL 5		APRIL 6		APRIL 7	
Regular Programme	9.00am to 3.00pm	Regular Programme	9.00am to 3.00pm	Regular Programme	9.00am to 3.00pm	Regular Programme	9.00am to 3.00pm	Regular Programme	9.00am to 3.00pm	Regular Programme	9.00am to 2.00pm
After School	3.00pm to 4.00pm	After School	3.00pm to 4.00pm	After School	3.00pm to 4.00pm	After School	3.00pm to 4.00pm	After School	3.00pm to 4.00pm	After School	2.00pm to 3.00pm
	4.00pm to 5.00pm		4.00pm to 5.00pm		4.00pm to 5.00pm		4.00pm to 5.00pm		4.00pm to 5.00pm		3.00pm to 4.00pm
Breakfast Club	8.00am to 9.00am	Breakfast Club	8.00am to 9.00am	Breakfast Club	8.00am to 9.00am	Breakfast Club	8.00am to 9.00am	Breakfast Club	8.00am to 9.00am	Breakfast Club	4.00pm to 5.00pm
Extension Hrs	5.00pm to 6.00pm	Extension Hrs	5.00pm to 6.00pm	Extension Hrs	5.00pm to 6.00pm	Extension Hrs	5.00pm to 6.00pm	Extension Hrs	5.00pm to 6.00pm	Extension Hrs	8.00am to 9.00am
	6.00pm to 7.00pm		6.00pm to 7.00pm		6.00pm to 7.00pm		6.00pm to 7.00pm		6.00pm to 7.00pm		5.00pm to 6.00pm
											6.00pm to 7.00pm

Enrollment Form 2018 (Page 3)

MON	TUE	WED	THU	FRI	SAT
APRIL 9	APRIL 10	APRIL 11	APRIL 12	APRIL 13	APRIL 14
CLOSED	CLOSED	Regular Programme	Regular Programme	Regular Programme	Regular Programme
		9.00am to 3.00pm	9.00am to 3.00pm	9.00am to 3.00pm	9.00am to 2.00pm
		After School	After School	After School	After School
		3.00pm to 4.00pm	3.00pm to 4.00pm	3.00pm to 4.00pm	2.00pm to 3.00pm
		4.00pm to 5.00pm	4.00pm to 5.00pm	4.00pm to 5.00pm	3.00pm to 4.00pm
		Breakfast Club	Breakfast Club	Breakfast Club	Breakfast Club
		8.00am to 9.00am	8.00am to 9.00am	8.00am to 9.00am	4.00pm to 5.00pm
Extension Hrs	Extension Hrs	Extension Hrs	Breakfast Club		
5.00pm to 6.00pm	5.00pm to 6.00pm	5.00pm to 6.00pm	8.00am to 9.00am		
6.00pm to 7.00pm	6.00pm to 7.00pm	6.00pm to 7.00pm	Extension Hrs	Extension Hrs	
				5.00pm to 6.00pm	5.00pm to 6.00pm
				6.00pm to 7.00pm	6.00pm to 7.00pm

Private Tuition must be booked directly with us. Please complete this form with your attendance dates and then let us know in writing which subjects/instrument you would like your child to learn.

[Book Spring School](#)

[Back to Main Page](#)



Kspace International School, 5-13-39 Shirokanedai, Minato-ku, Tokyo, 108-0071, Japan
 kspace@kspacetokyo.org enquiries@kspacetokyo.org



@kspaceinternationalschool



@kspaceinternational



@kspacetokyo