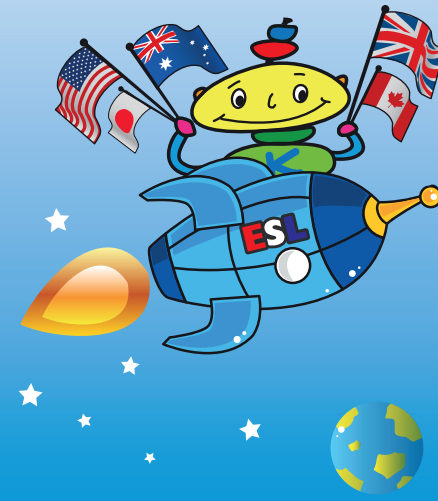


# Kspace SATURDAY SCHOOL



[www.kspacetokyo.org](http://www.kspacetokyo.org)

5-13-39 Shirokanedai, Minato-ku, Tokyo 108-0071 TEL 03-5421-4186 [enquiries@kspacetokyo.org](mailto:enquiries@kspacetokyo.org)

Kspace Saturday School is a child-only programme. At Kspace we have small classes and a high teacher:student ratio, plus a lively and happy atmosphere that makes all children feel instantly welcomed. We offer excellent community feedback so that you can keep track of what is happening in your child's age group and feel part of our family!

Our teachers are all ESL specialists who work in our main International School and have schooled hundreds of happy students to achieve EXCELLENT RESULTS! Any parent who wishes to turn their child's Saturdays into pure quality time should enroll in this programme!

### OUR STUDENTS

OUR STUDENTS We welcome all children from 14 months to 9 years old who want to learn to communicate in English. Children of many language and cultural backgrounds attend our sessions. We highly recommend this programme for ELL/ESL students, returnees, and for any child who wants to learn or improve their English studies. Children also join us from other international schools so that they can enjoy the special 'Kspace' experience!

### OUR AGE GROUPS

We offer four main age groups. The younger age groups are designed to accept children whose English language level ranges from beginner to advanced. Complete English beginners for the oldest groups may benefit from additional learning support. The groups all have a different curriculum, themes and materials, so that your child always has somewhere to progress to, and many levels of challenge.



Please see specific age/groups handouts for more info.

Also - see our Saturday/Midweek ESL Elementary Programme (6yrs - 10yrs, after school hours)!

### OUR METHOD

- ★ Easy-to-understand lessons
- ★ Music/drama based programmes
- ★ Unforgettable theme based curriculum
- ★ Fun activities: gym play, songs, art & craft, puppet shows, early phonics and maths
- ★ Upbeat, lively atmosphere
- ★ Live music performed by real musicians
- ★ Warm and friendly students, teachers and community
- ★ No pressure, non-competitive, supportive environment
- ★ Teachers are English language natives/English teaching experts
- ★ Learn a range of British, American, Canadian, Australian, clear accents
- ★ Fun international festivals and traditions celebrated together



### OUR TEAM

Our team is made up of amazingly skilled, charismatic teachers. Each teacher has a lot of experience teaching a variety of age groups and has a broad range of talents. Our team is musically and creatively gifted and expert at assessing students' needs. Teachers are chosen from Kspace International School, are native/fluent English speakers and have lots of experience in Japan/with EFL learners.

### OUR COMMUNITY

Saturday School Membership entitles the named child to attend Parent & Child programmes too, and children get free membership to Seasonal Programmes and our Saturday After School. The member child and parents will also receive invites to community picnics and Saturday calendar highlights.

### HOW OFTEN SHOULD MY CHILD ATTEND?

Your child can attend as often as you wish and we strongly recommend coming as often as possible. The programme offers booking flexibility. With weekly attendance and continuity, children can learn foundation vocabulary and phrases, build on the skills they already have, and grow in confidence. In our energetic and dynamic environment children have fun with useful and regularly used English.

### HOURS

Regular Saturday School Programme times are staggered to avoid congestion:

- ★ Shining Stars 8:45am to 1:45pm
- ★ Shooting Stars 8:50pm to 1:50pm
- ★ Sparkling Stars & Super Stars 9:00am to 2:00pm

### EXTRA HOURS

- ★ 8.00am to 9.00am Breakfast Club
- ★ 2.00pm to 5.00pm – After School Programmes, 1 hr each
- ★ 5.00pm to 7.00pm – Extension Hours, charged per hr

### AFTER SCHOOL CLASSES

AFTER SCHOOL CLASSES 2.00pm to 5.00pm, 1 hour for each subject/lesson

After School programmes are available in a wide variety of extracurricular subjects. Children enjoy a short break after their regular daily programme and then go into their chosen classes, or they can attend After School only. Please visit <https://www.kspacetokyo.org/main/afterschool/schedule.php> for the selection.

### PRIVATE TUTORIALS

Ages \*3 years to 11 years - 9.00am to 6.00pm. Private 1-1 hourly tutorials with our specialists are available in basic to advanced level, across academic subjects like Phonics, Mathematics, ESL, Science etc. We also offer 30 min. private music lessons in a range of instruments. Private tuition is booked in blocks.

\*Children age 3 yrs old based on DOB.

### MEALS

You can order meals and snacks from Kspace or bring in your own snacks and packed lunch. We have a strict food policy for food brought into the school and parents will be advised of details when they join.

### MEDIA & COMMUNICATION

Each enrolled Saturday School family enjoys:

- ★ Access to VIP Members' Site
- ★ Colourful weekly newsletters
- ★ Class emails
- ★ Theme sheets and occasional mini-videos and group photos

### EVENTS

Saturday School parents are a vital part of our community and within your membership you will also enjoy special charity calendar highlights. Our all-school family picnics are a great chance to mingle and make friends with the parents and children from our International Preschool/Kindergarten and across our community. Our oldest dance students also have end of term dance shows.

### UNIFORM

Students must wear Kspace official uniform items only - available in winter or summer sets and many sizes. Colours: Shining Stars: Orange/Yellow\* Shooting Stars: Blue/Red (winter) or Blue/Pink/Red (summer) \* Sparkling Stars: Green\* Super Stars Purple Class: Purple\* or Super Stars Navy Class: Navy\*

### WHEN IS ENROLLMENT?

After joining us for a paid trial, children can begin our courses at any time. We are open almost every Saturday of the year!

[Just contact us for more details.](#)